



**Massachusetts Bay
Transportation Authority**

DGM Remarks

Fiscal & Management Control Board

March 11, 2019



Franklin Line Double Track Project

Project Background

- Franklin branch has poorest annual average OTP of all lines – 85%
- 16 of the 21 miles of the Franklin branch are single track
- Single track limits:
 - Operations
 - Traffic
 - Schedule
 - Resiliency
 - Overall capacity





Franklin Line Double Track Project

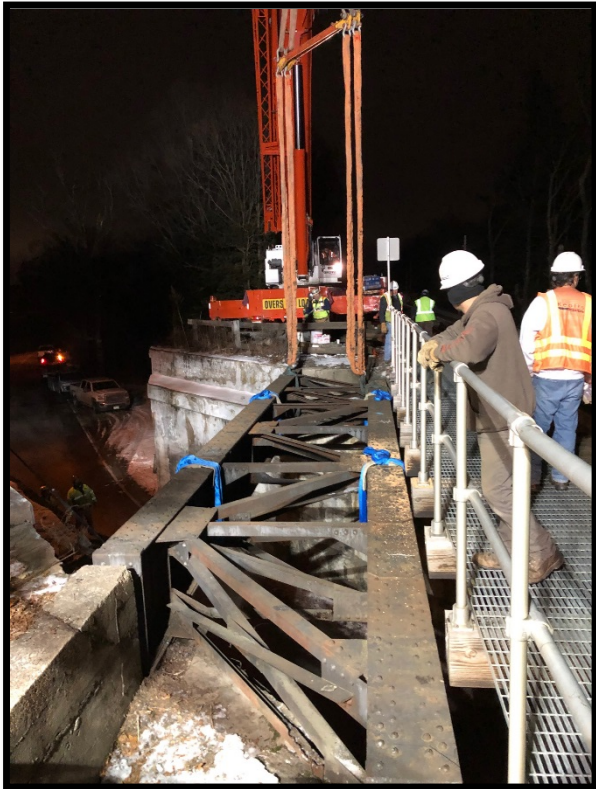
Project Description

- Build 4 miles of double track between Norfolk and Walpole stations
- Capital budget of \$20 million
- Operational Late 2019/
Early 2020





Franklin Line Double Track Project



West St. Walpole Bridge Truss Removal