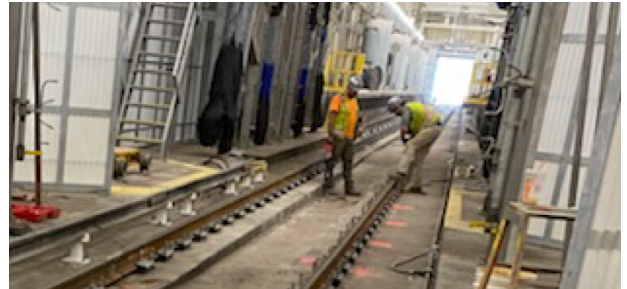


### Week in Review and Lookahead

Friday, July 7, 2023

Work continued this week on Orange Line Transformation projects in construction, with upgrades to Wellington Yard and Vehicle Maintenance Facility, Orange Line traction power substations, and more.



### Rail Fastener Replacement



**Tufts Curve: Northbound Side** OAK GROVE  
(65 fasteners)



**Tufts Curve: Southbound Side** FOREST HILLS  
(90 fasteners)



- ✓ **This Week** | Concrete repairs at Tufts Curve continued this week
- **Lookahead** | Crews will complete concrete repairs and prepare to demobilize from the site next week

\*Schedule subject to change with weather conditions and in accordance with public health directives  
Project percentages represent the value of the installed work

# Wellington Yard and Maintenance Facility Updates



**21,895 Feet of Track**



**99% Completed**

**69 Units of Special Track**



**99% Completed**

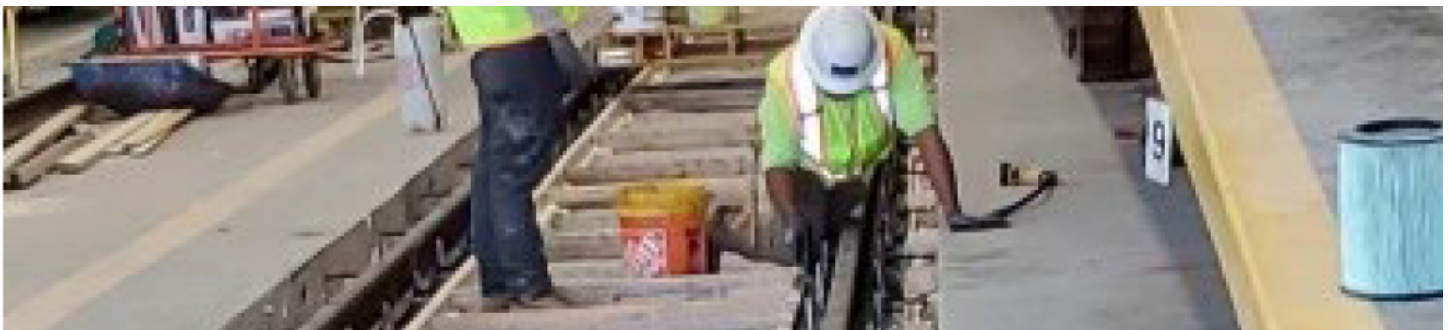
**Traction Power & Signals**



**95% Completed**

Wellington Yard: Upgrade Wellington Yard to increase service capacity, replace outdated infrastructure, and enhance safety

- ✓ **This Week** | Crews continued with punch list work and general clean-up of the yard. Crews performed preparation work for the erection of two high mast light poles and the final cutover of the new power system scheduled for July 8
- **Lookahead** | Crews will continue working on punch list items and clean-up

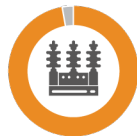


**Building Upgrade**



**90% Completed**

**Power Substation**



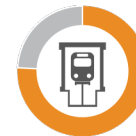
**97% Completed**

**Train Wash**



**90% Completed**

**Maintenance Bays**

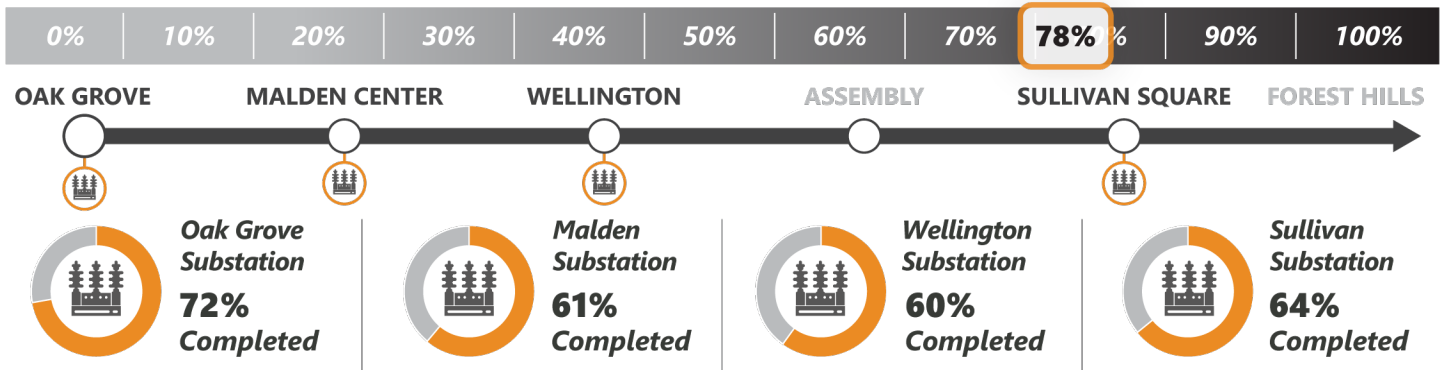
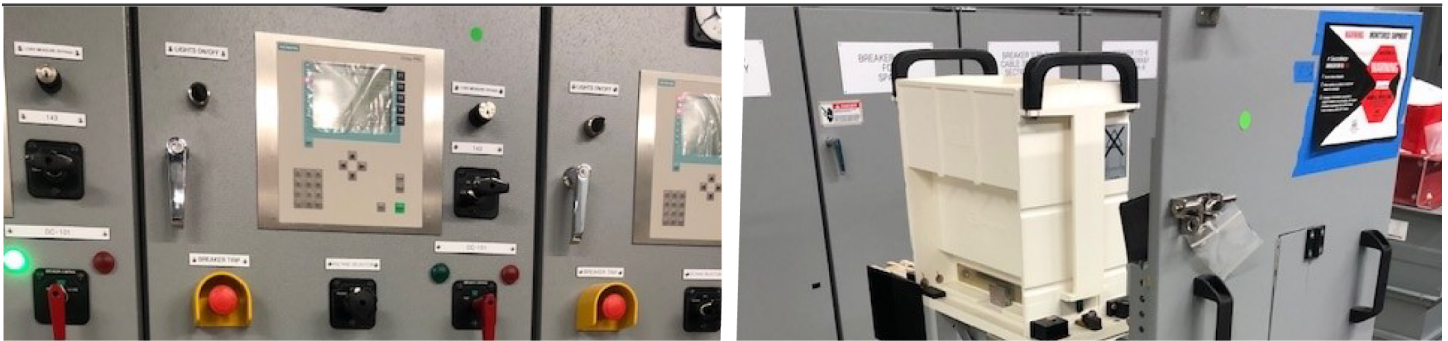


**75% Completed**

Wellington Maintenance Facility: Modernize the Vehicle Maintenance Facility to improve vehicle maintenance, reduce downtime and customer wait times, provide cleaner trains, and deliver safer operations

- ✓ **This Week** | Crews worked on grouting at track 19
- **Lookahead** | Crews will begin installation of aluminum retractable stairs at pit tracks 14 – 17. Caulking work will begin on the west exterior façade of the building

# Traction Power Substations



Traction Power Substations: Modernize the third rail power supply to reduce the risk of service disruptions; develop a power system capable of supporting additional Orange Line service

- ✓ **This Week** | At Oak Grove, crews installed power connections to the transformer
- **Lookahead** | Crews will continue performing cable connections and testing on the new equipment