

Week in Review and Lookahead

Friday, June 16, 2023

The **Orange Line** will bypass Haymarket in both directions until June 25 for Government Center Garage demolition work. An accessible shuttle will be available upon demand.



Rail Fastener Replacement



Tufts Curve: Northbound Side (65 fasteners) OAK GROVE



Tufts Curve: Southbound Side (90 fasteners) FOREST HILLS



- ✓ **This Week** | Crews cleaned the drainage system with a vacuum truck, continued punch list work, and began concrete demolition
- **Lookahead** | Concrete demolition and repair work will continue

Wellington Yard and Maintenance Facility Updates



21,895 Feet of Track



69 Units of Special Track

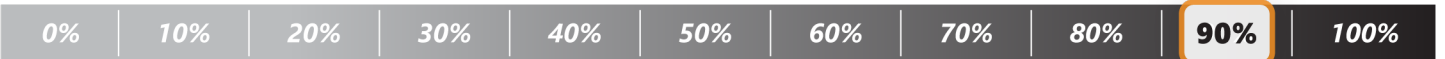
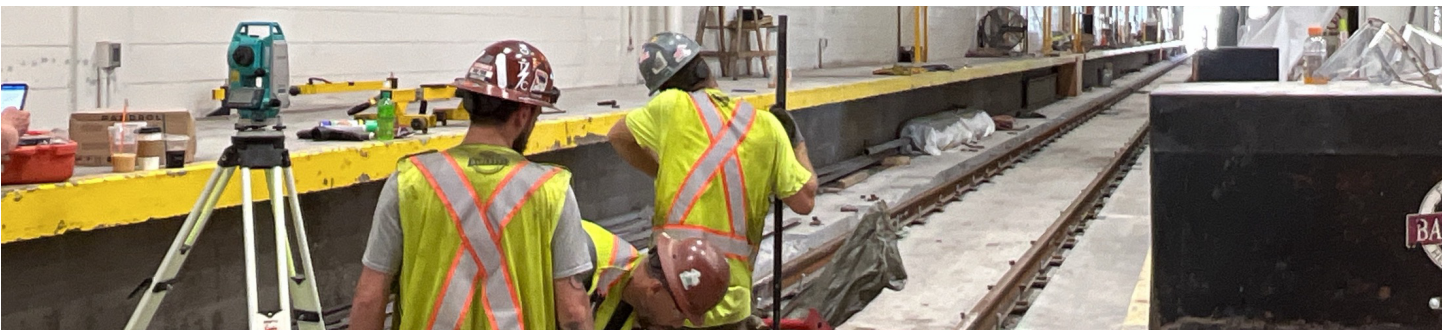


Traction Power & Signals



Wellington Yard: Upgrade Wellington Yard to increase service capacity, replace outdated infrastructure, and enhance safety

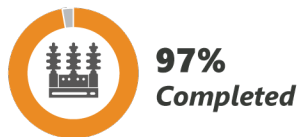
- ✓ **This Week** | Crews paved and patched miscellaneous areas on parking lot A, and they continued with punch list work and general clean-up of the yard
- **Lookahead** | Crews will continue working on punch list items and clean-up. Light pole erection has been rescheduled for July 8



Building Upgrade



Power Substation



Train Wash



Maintenance Bays

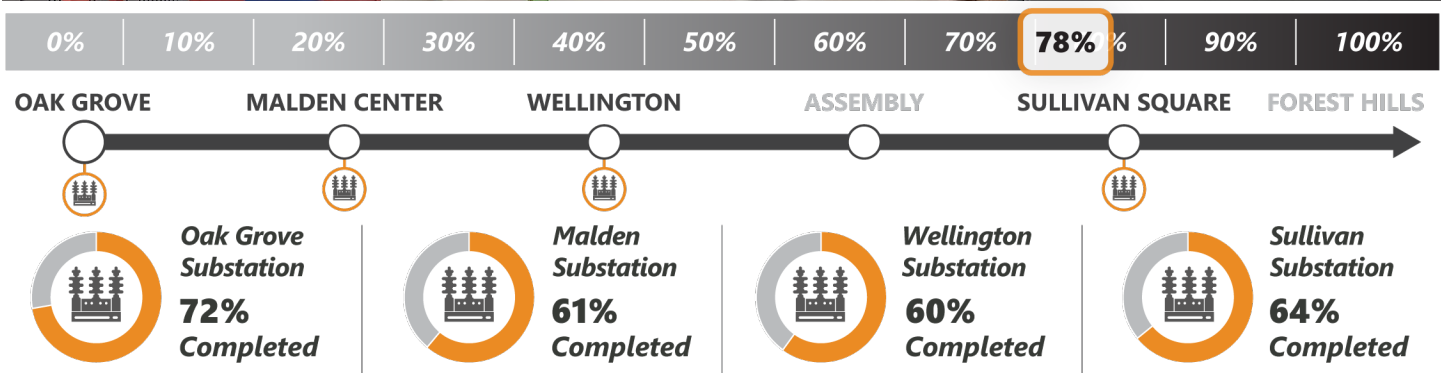


Wellington Maintenance Facility: Modernize the Vehicle Maintenance Facility to improve vehicle maintenance, reduce downtime and customer wait times, provide cleaner trains, and deliver safer operations

- ✓ **This Week** | Crews welded rail joints and installed anchors at track 19
- **Lookahead** | Crews will continue working on track 19, and finalize the car wash connections on track 18

*Schedule subject to change with weather conditions and in accordance with public health directives
Project percentages represent the value of the installed work

Traction Power Substations



Traction Power Substations: Modernize the third rail power supply to reduce the risk of service disruptions; develop a power system capable of supporting additional Orange Line service

- ✓ **This Week** | At Oak Grove, crews continued the programming and sequencing process on the transformers. Crews installed insulating wall panels behind the electrical switchgear equipment. At Wellington, crews worked on the installation of a battery system
- **Lookahead** | Crews will continue performing cable connections and testing on the new equipment