

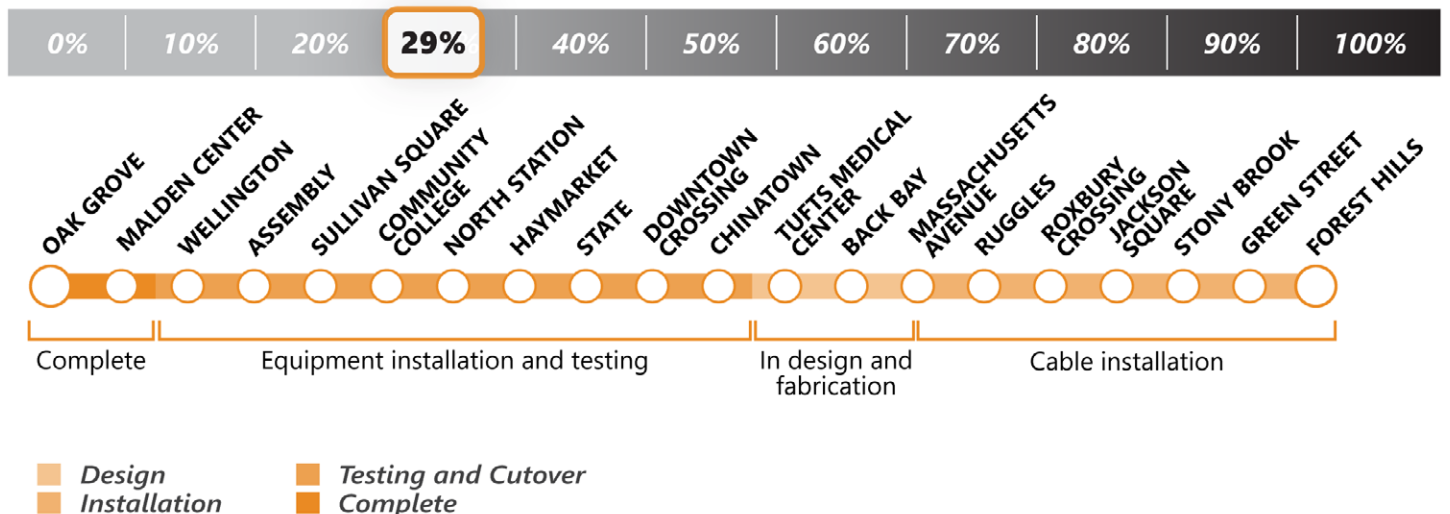
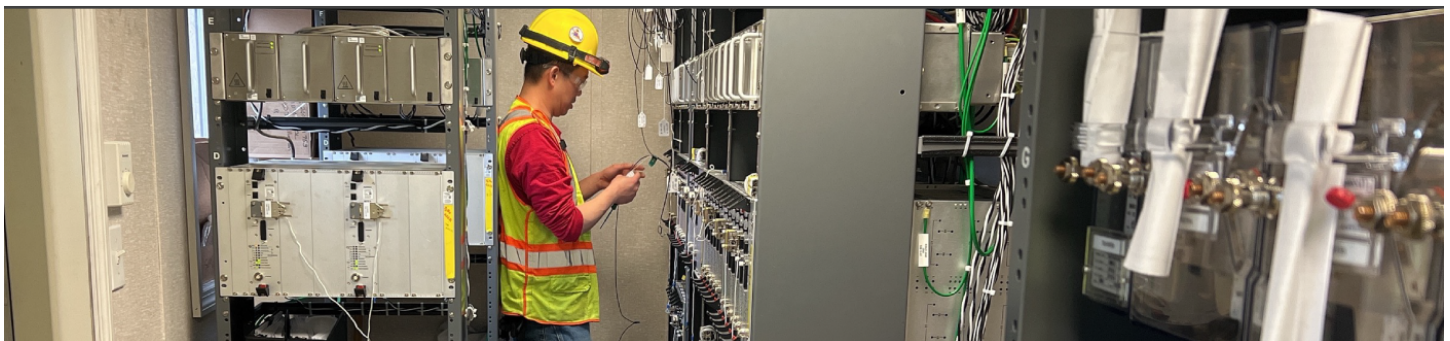
### Week in Review and Lookahead

Friday, March 24, 2023

Shuttle buses will replace Orange Line service between Wellington and North Station from 8:45 PM to the end of service from March 27 – 30 for maintenance work



### Signal Upgrades



Orange Line Signals: Increase safety and reliability with modernized signals

- ✓ **This Week** | At Wellington North, crews conducted high-definition loop testing, operational testing, control line testing, and connected wires in the signal bungalow. At Wellington South and at North Station, crews installed new racks, wires, and cables in the signal houses
- **Lookahead** | Crews will continue testing and installing racks, wires, and cables at various locations and will prepare for signal cutovers and other future work

# Wellington Yard and Maintenance Facility Updates



21,895 Feet of Track



**99%**  
Completed

69 Units of Special Track



**99%**  
Completed

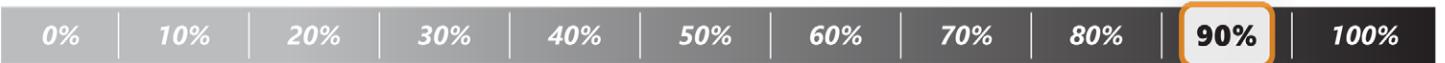
Traction Power & Signals



**95%**  
Completed

Wellington Yard: Upgrade Wellington Yard to increase service capacity, replace outdated infrastructure, and enhance safety

- ✓ **This Week** | Crews cleaned up and re-arranged the yard in preparation for the high mast light poles erection, however, the work planned for this weekend has been cancelled due to weather which will delay completion of the yard upgrades. Additionally, crews continued with punch list work and general clean-up
- **Lookahead** | Crews will continue working on punch list items and clean-up

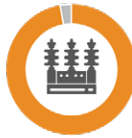


Building Upgrade



**90%**  
Completed

Power Substation



**97%**  
Completed

Train Wash



**90%**  
Completed

Maintenance Bays



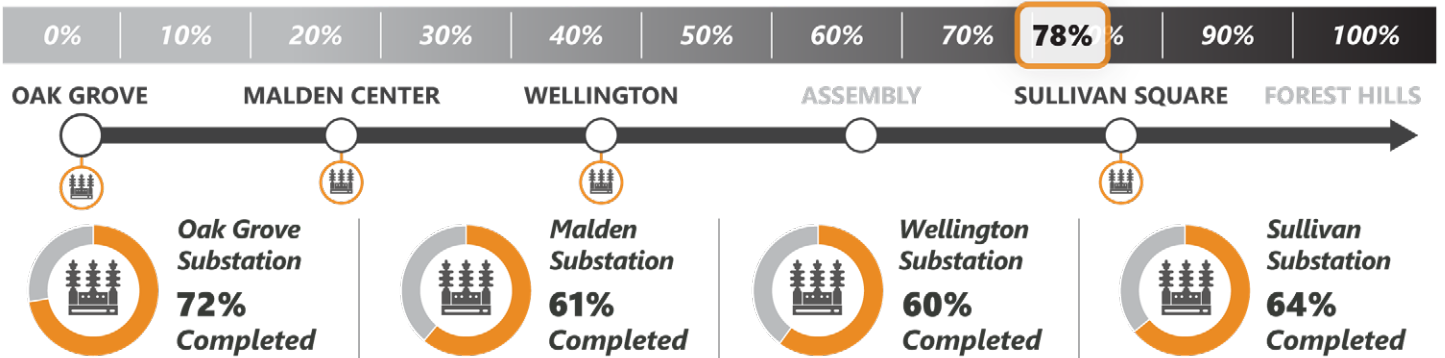
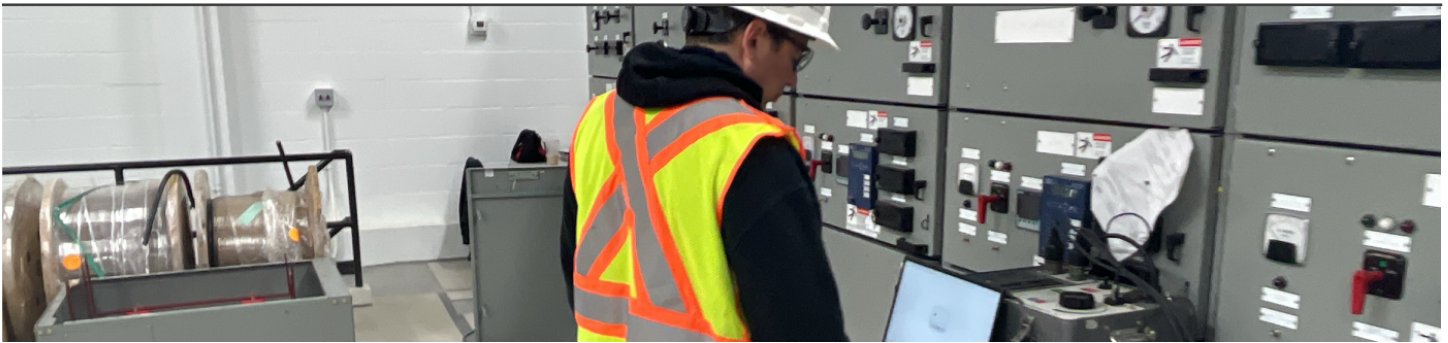
**75%**  
Completed

Wellington Maintenance Facility: Modernize the Vehicle Maintenance Facility to improve vehicle maintenance, reduce downtime and customer wait times, provide cleaner trains, and deliver safer operation

- ✓ **This Week** | Crews continued the demolition of track 19 by performing saw cutting and concrete removal. Electricians worked on door security connections in the traction power room, and on the fire alarm system
- **Lookahead** | Crews will continue working on track 19 demolition, and electricians will continue working on the fire alarm and security systems



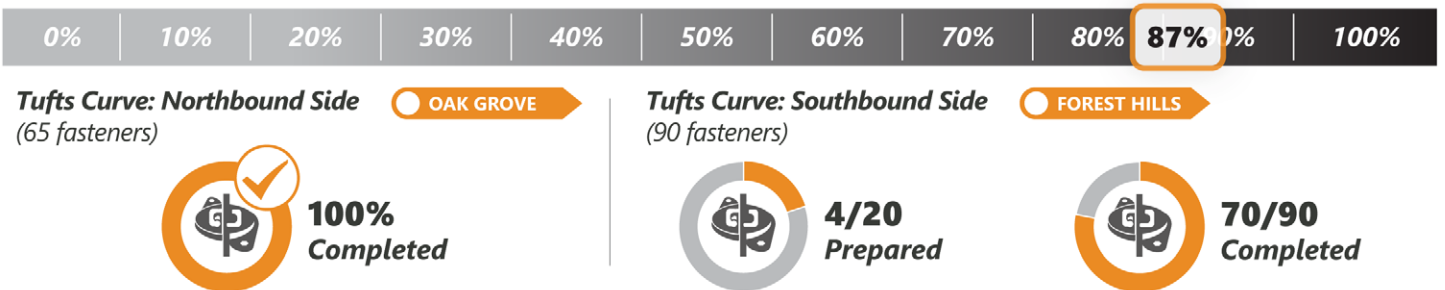
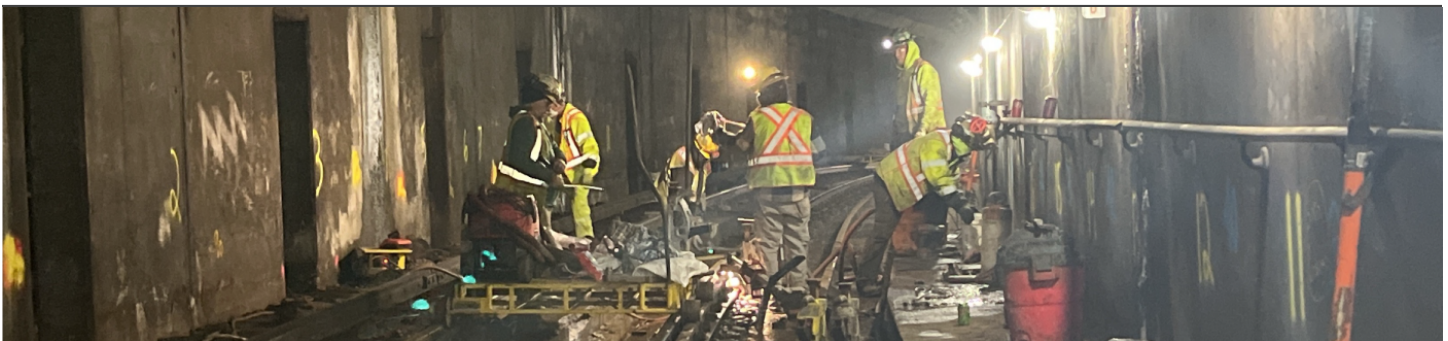
# Traction Power Substations



**Traction Power Substations:** Modernize the third rail power supply to reduce the risk of service disruptions; develop a power system capable of supporting additional Orange Line service

- ✓ **This Week** | At Oak Grove, crews continued installing supports for high-intensity alternating current (AC) and direct current (DC) electrical connections and interconnecting equipment, and continued equipment testing. At Sullivan, crews conducted point-to-point tests
- **Lookahead** | Crews will continue performing installation of high-intensity AC and DC electrical connection components

# Rail Fastener Replacement



- ✓ **This Week** | Rail fastener replacement continued on the southbound side of Tufts curve
- **Lookahead** | Crews will continue to install new rail fasteners

\*Schedule subject to change with weather conditions and in accordance with public health directives  
Project percentages represent the value of the installed work