

Green Line Transformation

Construction Project Updates



Week in Review and Lookahead

Friday, October 28, 2022

Train Protection and Track Upgrades on the D Branch are now complete, and test trains will operate tonight prior to the return of service tomorrow, Saturday, October 29th; two days ahead of schedule. This marks the end of the last full access closure of the year for the Green Line. During these closures **crews have been able to replace over 14,000 feet of track, more than 150 GLTPS components, and upgrade 6 units of special trackwork and 10 pedestrian crossings.** The Capital Transformation team would like to thank our riders, neighbors, and local stakeholders that made this possible.



[Click here to watch a video update - English](#)

[Click here to watch a video update - Spanish](#)

Green Line Train Protection and Track Upgrades



B Branch: June 20 - July 1	C Branch: July 11 - 22	E Branch: August 6 - 21	D Branch: Sep. 24 - Oct. 28
-----------------------------------	-------------------------------	--------------------------------	------------------------------------



GLTPS Wayside Equipment Installation



100% Completed

Track Replacement



112% Completed

Pedestrian Crossing Upgrades

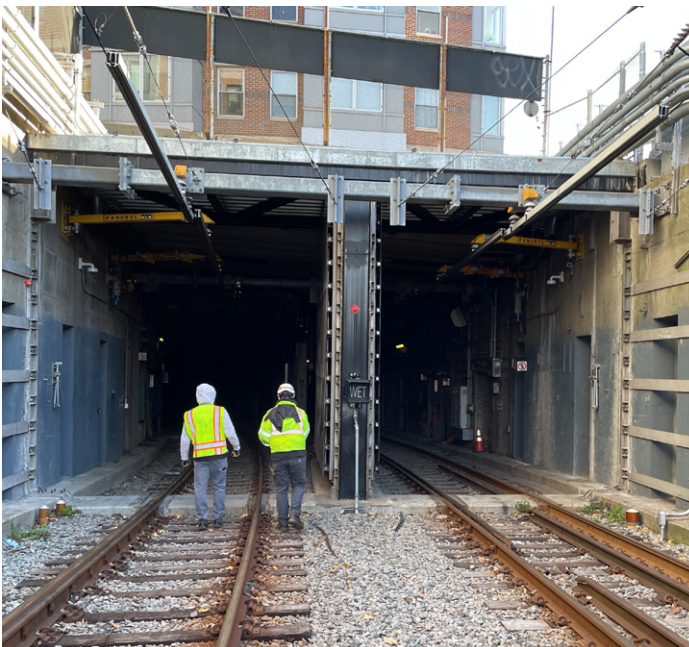
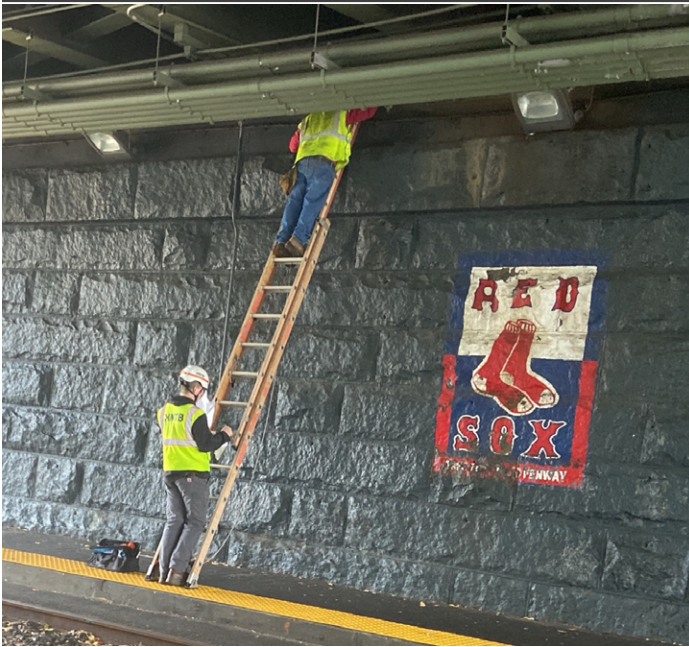


100% Completed

Green Line Train Protection and Track Upgrades: From June through October, we'll complete over 10,000 feet of track upgrades on the B, C, D, and E branches alongside work on the [Green Line Train Protection System \(GLTPS\)](#)

- ✓ **This Week** | Crews have completed installation of GLTPS wayside equipment, and are completing punch list activities for newly installed track
- **Lookahead** | Test trains will operate tonight prior to the return of regular Green Line service

*Schedule subject to change with weather conditions and in accordance with public health directives
Project percentages represent the value of the installed work



- ✓ **This Week** | Several MBTA departments took advantage of the D Branch closure to perform a variety of additional work, including bridge inspections, tree trimming, and painting along the branch