

Week in Review and Lookahead

Friday, October 14, 2022

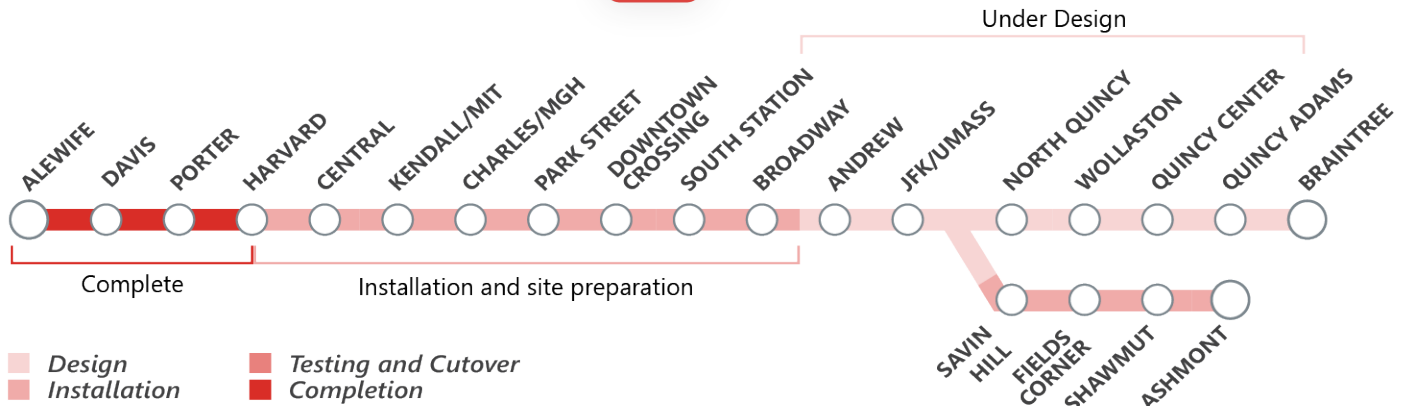
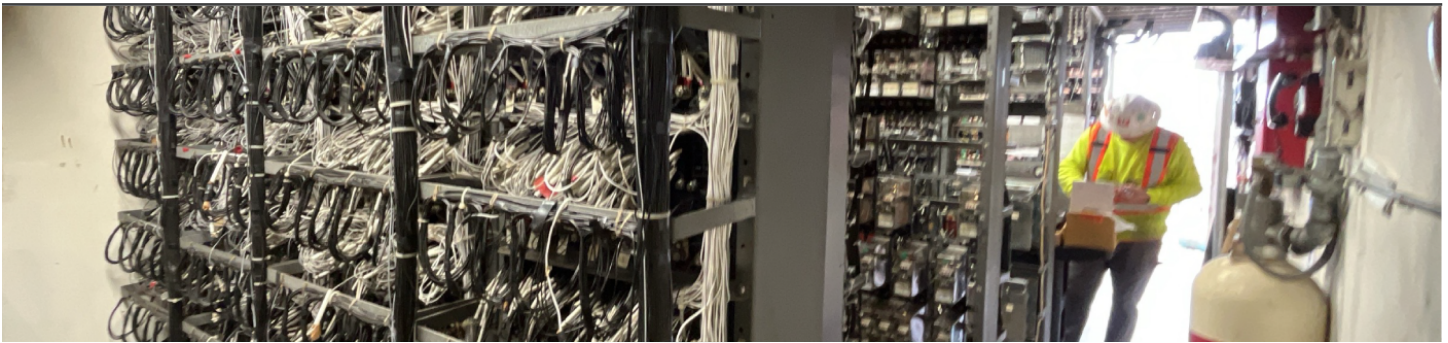
Thanks to everyone who attended our virtual public meeting Thursday, October 13th on the upcoming [Codman Yard Expansion and Improvements project](#). If you weren't able to attend, a copy of the presentation is available on the [meeting page](#), and a recording of the meeting will be posted soon. Read below for the latest Red Line Transformation updates

Construction Phases | Installation of New Tracks (Zone A)

- Crews will build the six new storage tracks, replace the northbound and southbound mainline tracks leading to Ashmont Station and install a new utility bridge that runs over Gallivan Blvd that will support new power cables and conduit.

Codman Yard Expansion and Improvements
Virtual Public Meeting

Signal Upgrade

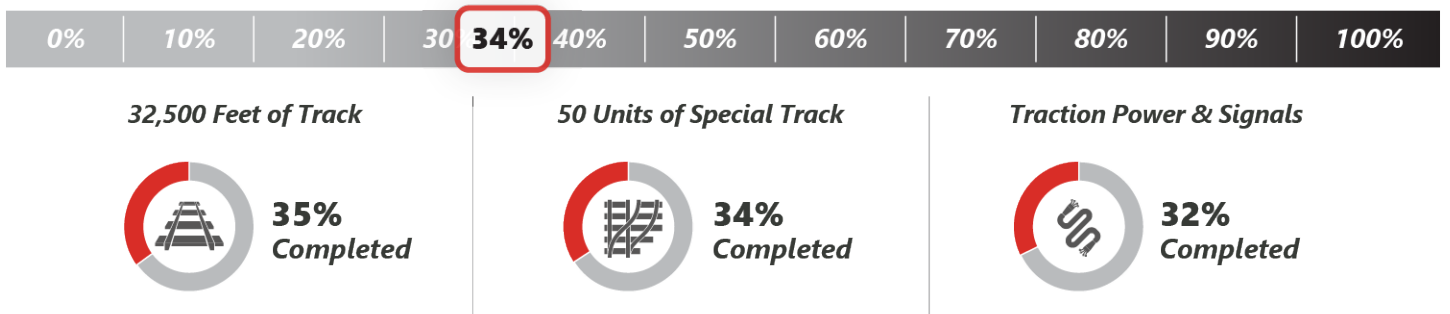


Signal Upgrade: Increasing capacity, through reducing headways with modernized signals.

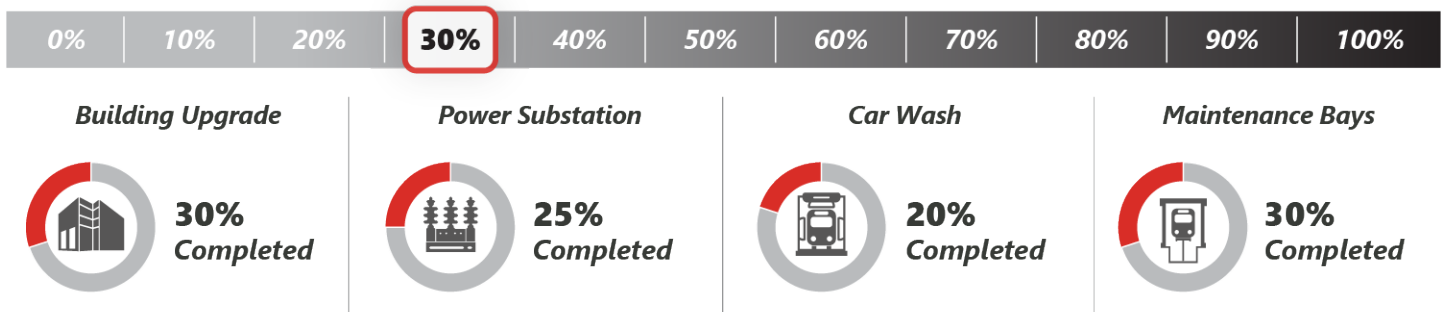
- ✓ **This Week** | Crews installed new signal cable at the new signal house at Ashmont station, and tested signals at Downtown Crossing, Central, Park St., and Harvard. At Quincy Adams crews continued the installation of new electrical racks and wiring at the existing and temporary signal houses
- **Lookahead** | Crews will continue testing signals and installing new electrical components at Downtown Crossing, Ashmont, Park St., Central, Harvard, and Quincy Adams

*Schedule subject to change with weather conditions and in accordance with public health directives
Project percentages represent the value of the installed work

Cabot Yard and Maintenance Facility Updates



Cabot Yard: Upgrade the Yard to increase service capacity, replace outdated infrastructure, and enhance safety.



Cabot Maintenance Facility: Modernize the Vehicle Maintenance Facility to improve vehicle maintenance, reduce downtime and customer wait times, provide cleaner cars, and deliver safer operations

*Schedule subject to change with weather conditions and in accordance with public health directives
Project percentages represent the value of the installed work