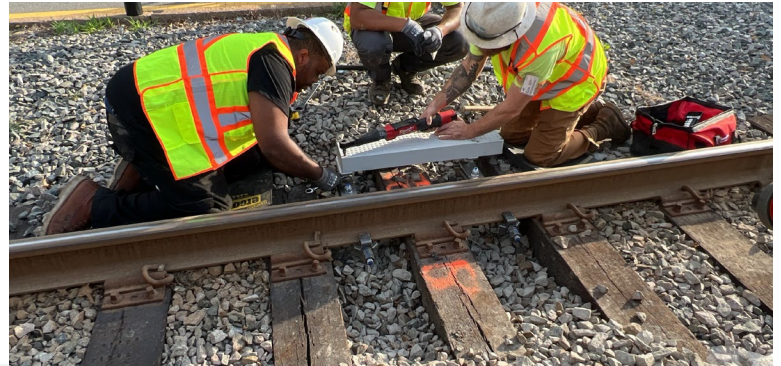


**C Branch: Alternative Service from Cleveland Circle to Kenmore**  
Monday, July 11 – Friday, July 22, 2022

*During this 12-day period, we will install GLTPS Train Protection kits, attach speed sensors to the track and replace 1,500 feet of track from St. Mary's Portal to Beacon Junction.*



*Prep work will take place from July 5 – 8, however this will not affect Green Line service. During this time, the median parking area between Hawes St and Amory Street and the left lane of westbound traffic will be closed to allow for equipment and materials storage.*

**Hawes Street to Park Drive, July 11 - 22:** Beacon Street will be reduced to one lane in each direction between Hawes St and St Mary's St on Mondays through Fridays during rush hour. The eastbound left lane will be removed from 6:00 am to 9:00 am and the westbound lane will be removed from 3:00 pm to 7:00 pm. The Carlton St track crossing will remain closed for the duration of the construction.

**Pedestrian Access:** Crosswalks will be closed, and pedestrian detour signage will be set up to direct pedestrians to cross Beacon St at either Hawes St or Park Dr.

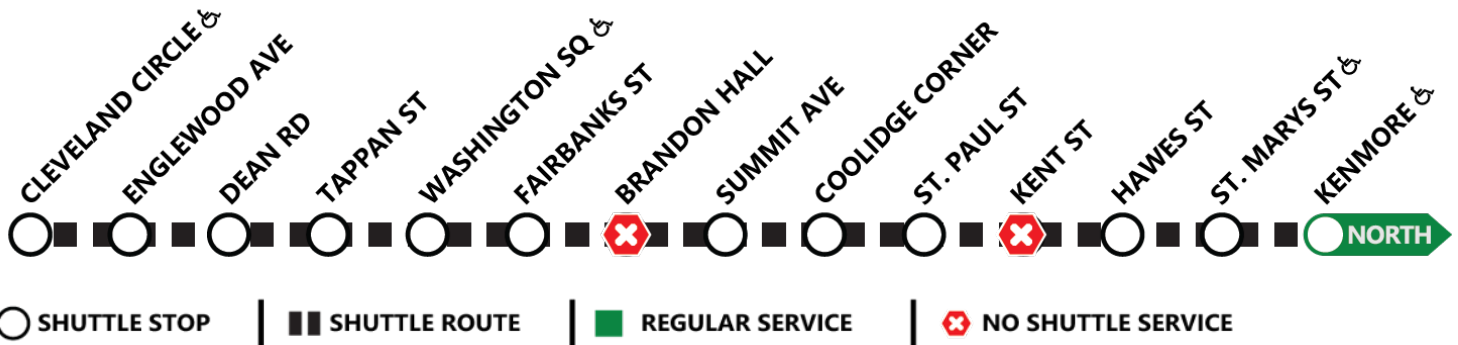
**Parking:** The median parking areas between St. Mary's Station to Carlton St, and from Carlton St to Hawes St will be taken for track reconstruction activities.

To stay informed about the Green Line Transformation program, please visit [www.mbta.com/GLT](http://www.mbta.com/GLT) and subscribe to our weekly email updates at [https://bit.ly/glt\\_eblast](https://bit.ly/glt_eblast).



# Green Line Train Protection and Track Upgrades

[www.mbta.com/GLTrack](http://www.mbta.com/GLTrack)



Shuttles will not stop at Brandon Hall or Kent St.

Riders will be directed to Fairbanks St or Summit Ave instead of Brandon Hall

Riders will be directed to St. Paul St or Hawes St instead of Kent St

## Alternative Service: From July 11 – 22 free shuttle buses will operate along the Green Line on the same schedule as train service.

- Shuttles are a combination of MBTA buses and private carrier buses
- All drivers are trained to assist riders and to operate lifts
- Service will be monitored throughout and adjusted to reduce crowding

## Shuttle stops at all but two of the stations along the C Branch to optimize service and reduce travel times

- Minimizing the number of stops improves shuttle bus efficiency
- Diversions add less than 800 feet to a walking route
- Signage will advise customers where they can board shuttle buses

**Noise:** The loudest work will occur when crews cut rails with a saw and tamp the track to the proper elevation. We use several strategies to minimize noise, and we monitor noise levels and respond to all complaints. If you would like to report a noise issue, **please call the 24/7 hotline at 617-222-4100.**

- If information is needed in another language, please contact the MBTA Title VI Specialist by phone at (617) 222-3200
- 如果需要使用其它语言了解信息,请联系麻纱湾区交通局, (MBTA) 《民权法案》第六章专员,电话 (617) 222-3200
- Если Вам необходима данная информация на любом другом языке, пожалуйста, свяжитесь со специалистом по Титулу VI MBTA по тел: (617) 222-3200
- Si necesita esta información en otro idioma, por favor contacte al especialista de MBTA del Título VI al (617) 222-3200