



# Welcome!

Thank you for joining us. This is the first Public Meeting on Downtown Crossing Accessibility Phase II.

Please settle in!

The meeting will start shortly.



# Downtown Crossing Accessibility Phase II

Virtual Public Meeting

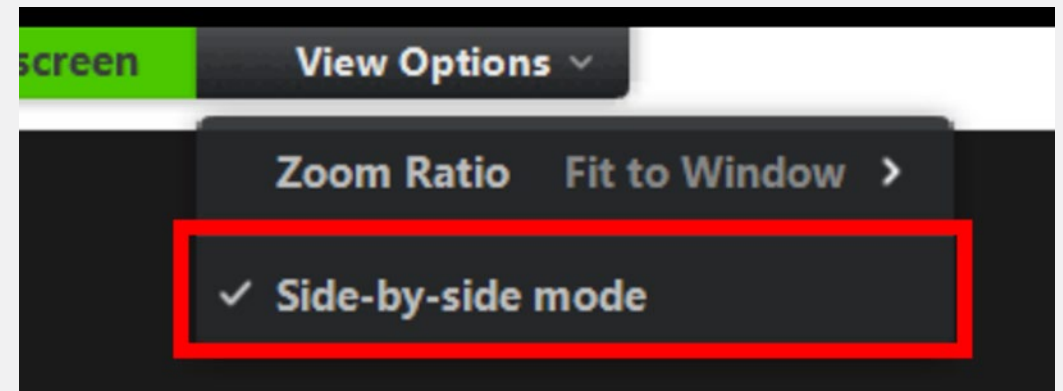
October 25, 2021



# How To Use Zoom

## ASL Interpretation

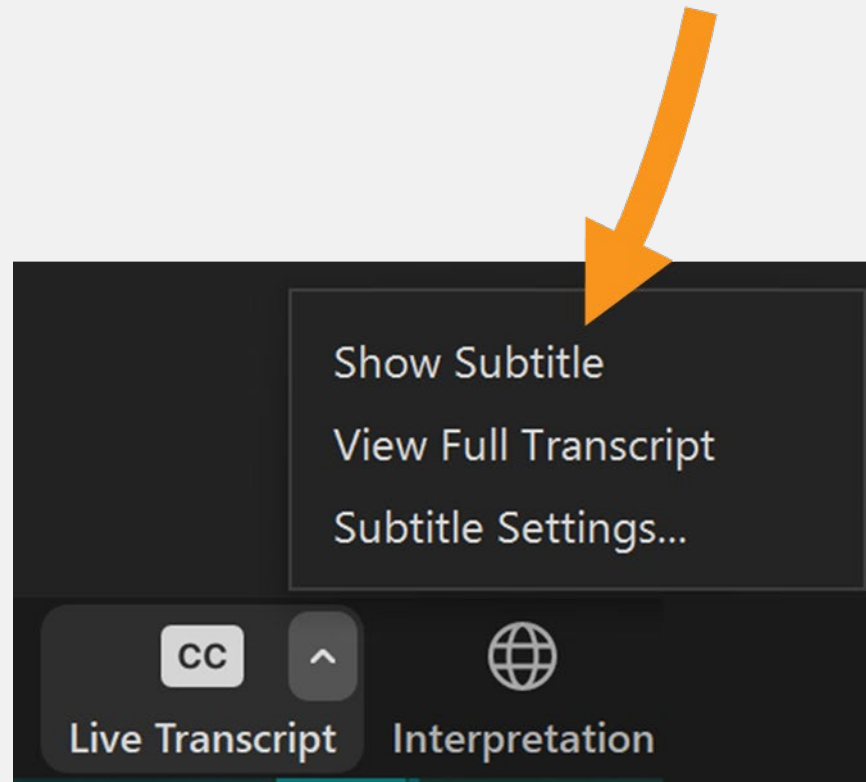
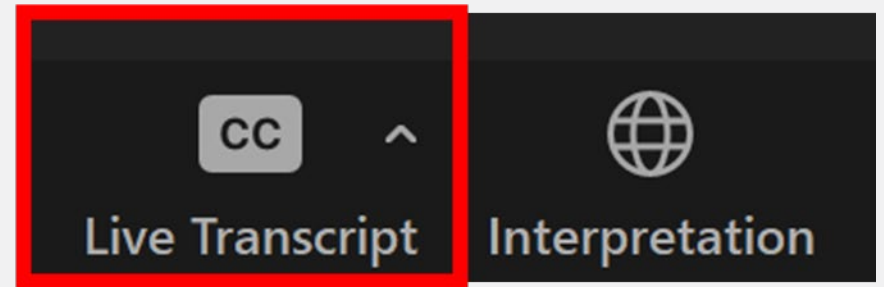
- You can view ASL interpretation by changing your **View Options**, which are found at the top of your screen.
- **Side-by-side mode** will allow you to adjust the size of the video with the scale bar between the shared screen and webcams.
- *Note: ASL interpreters will only be interpreting the presenters' speech, all questions from attendees will have to occur through the Q&A tool.*





# How To Use Zoom Captioning

- You can view closed captions by clicking the **Live Transcript** feature and selecting from the options shown.
- **Show Subtitle** will display a caption at the bottom of the screen.
- **View Full Transcript** will display the meeting's audio transcription in a window to the right.





# Agenda

- History & Objectives
- Scope & Locations
  - Park Street
  - Macy's Elevator
  - Winter Street
- Schedule
- Outreach, Website & Contact Information



# History & Objectives

## ***History:***

- DTX Station built in 1908, 1915
- Phase I (2015) – Two new elevators
- Phase II (now) – Three new elevators that will provide fully accessible transfers
  - One Park Street elevator will connect to the Winter Street concourse and the Red Line's Center Platform
  - Two DTX elevators will connect to the Red Line and Orange Line

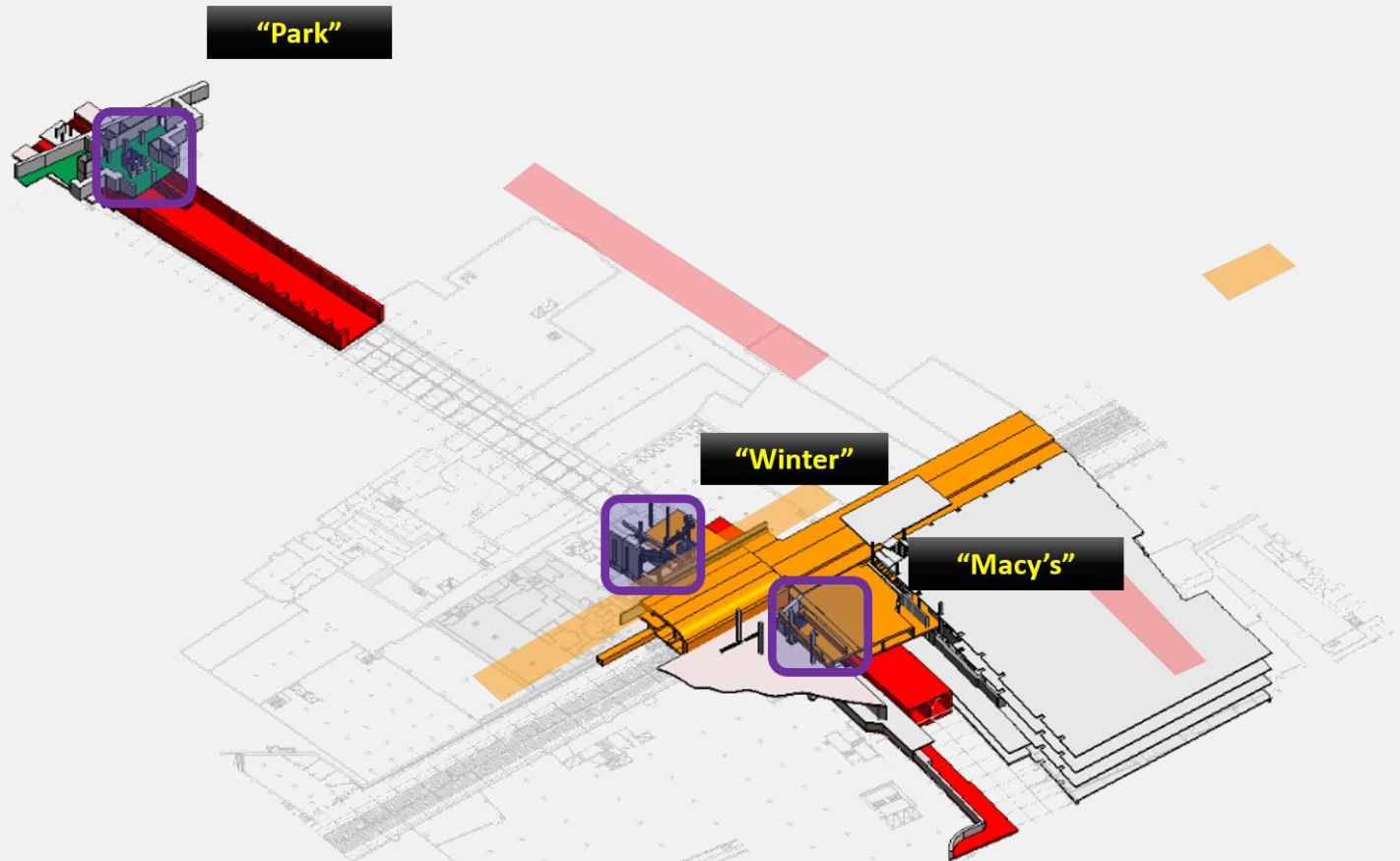
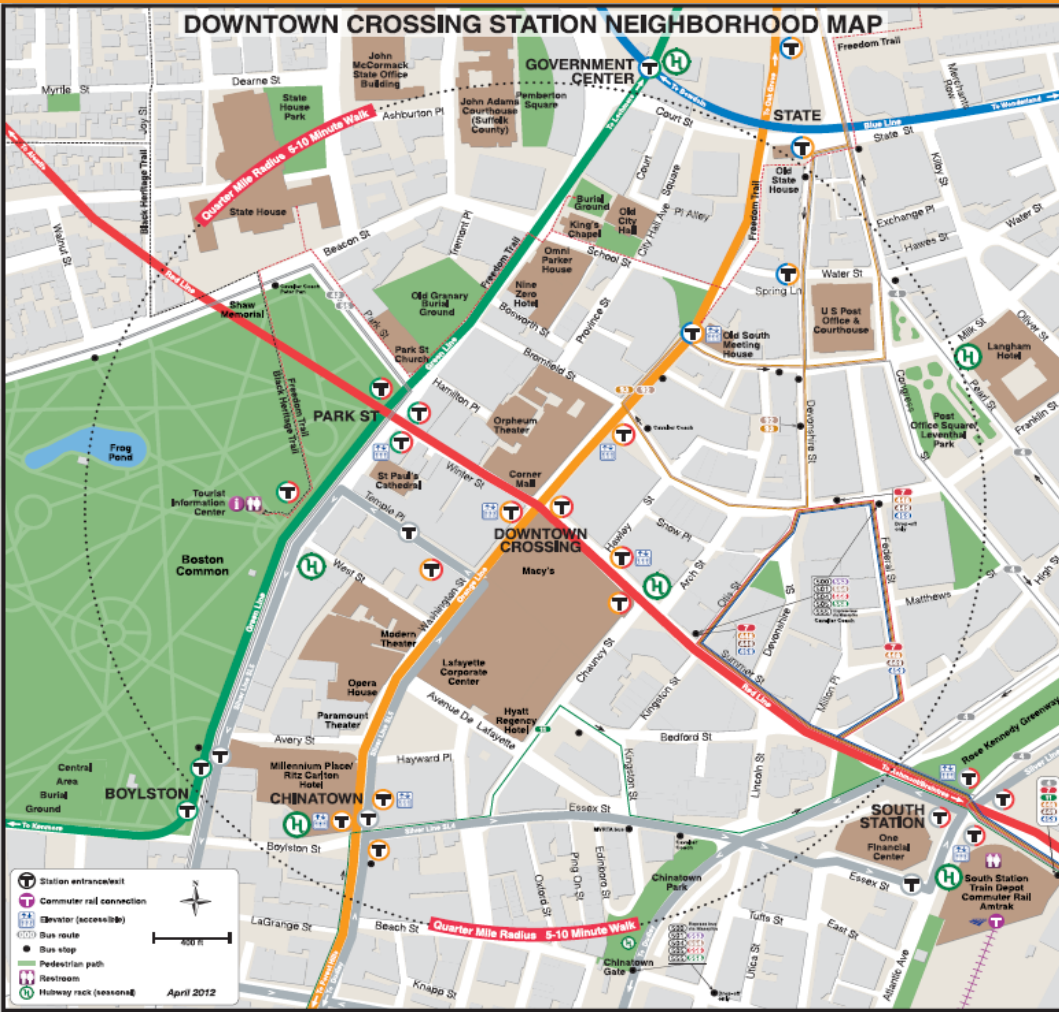
## ***Objectives:***

- Implement Americans with Disabilities Act (ADA) upgrades to fulfill code compliance requirements
- Increase passenger access and overall system safety
- Reduce life cycle maintenance costs



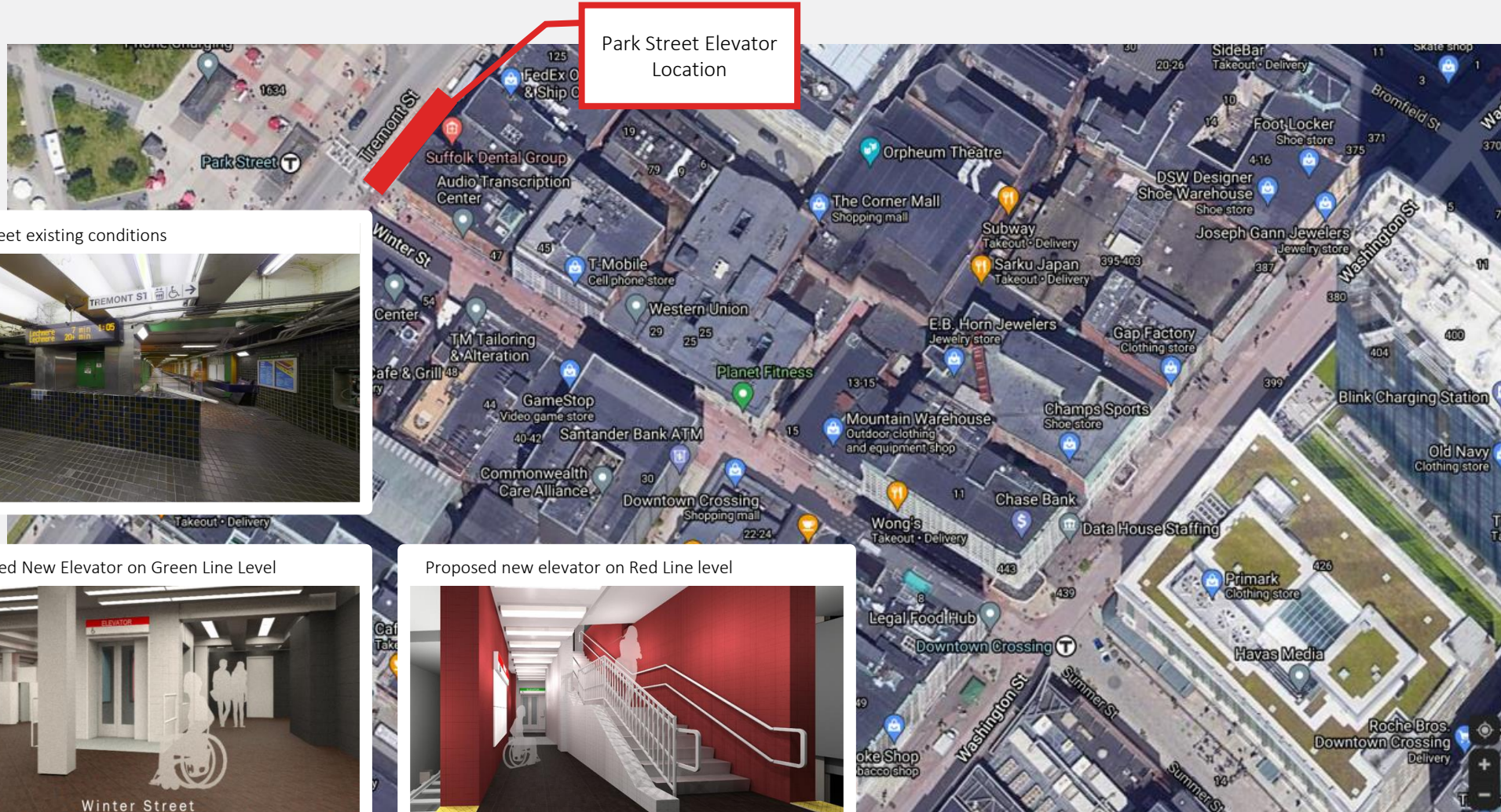
# Scope & Locations

- Park: Replace aged and undersized existing 808 and improve transfer
- Winter: Provide transfer and exit
- Macy's: Provide transfer





# Park Street Elevator



Park Street Elevator Location

Park Street existing conditions



Proposed New Elevator on Green Line Level



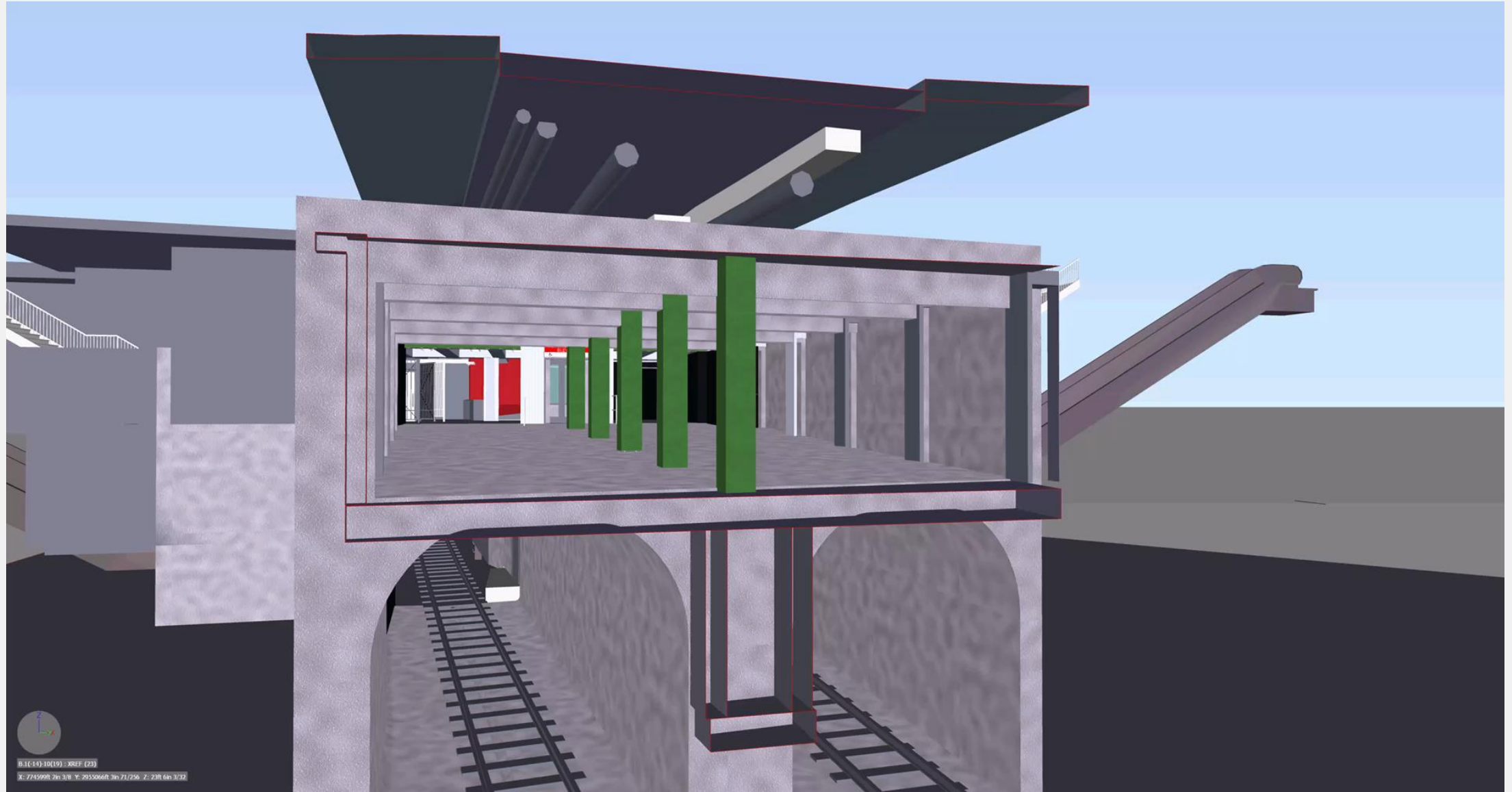
Proposed new elevator on Red Line level



Note: This drawing is not to scale and is only intended for illustrative purposes.

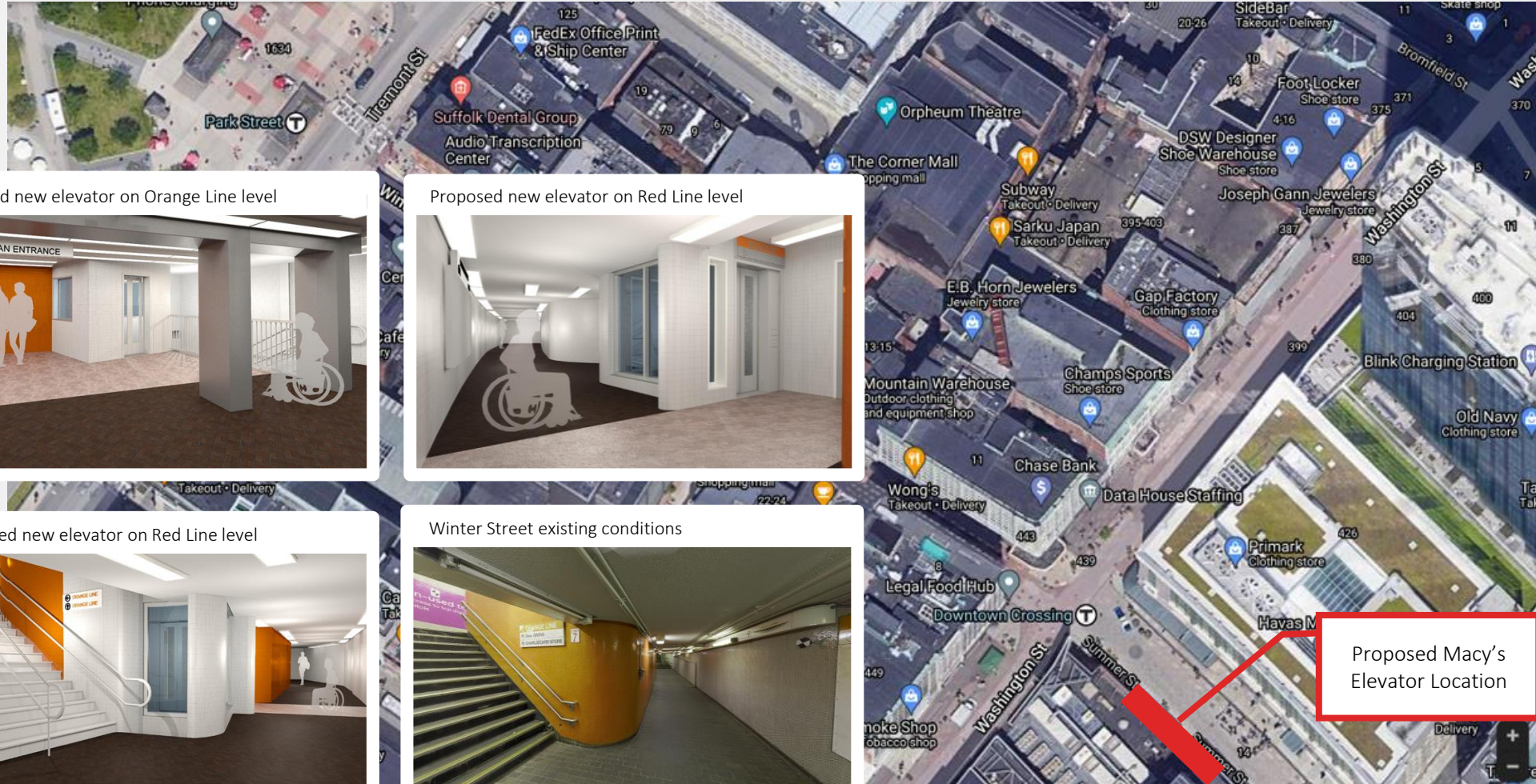


# Park Street Elevator





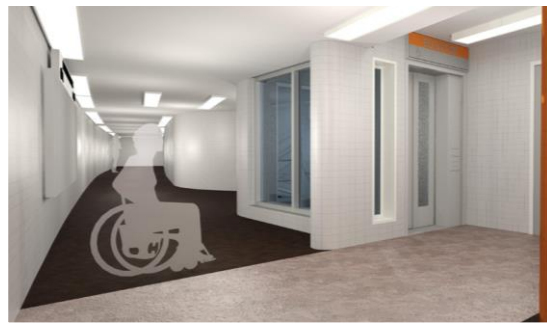
# Macy's Elevator



Proposed new elevator on Orange Line level



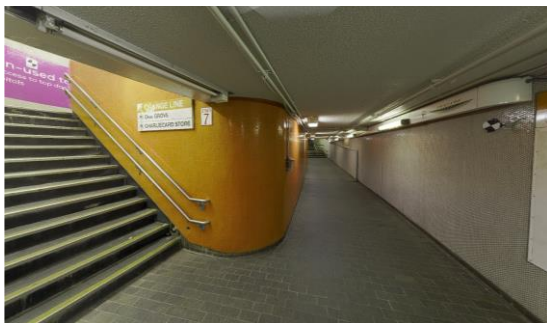
Proposed new elevator on Red Line level



Proposed new elevator on Red Line level



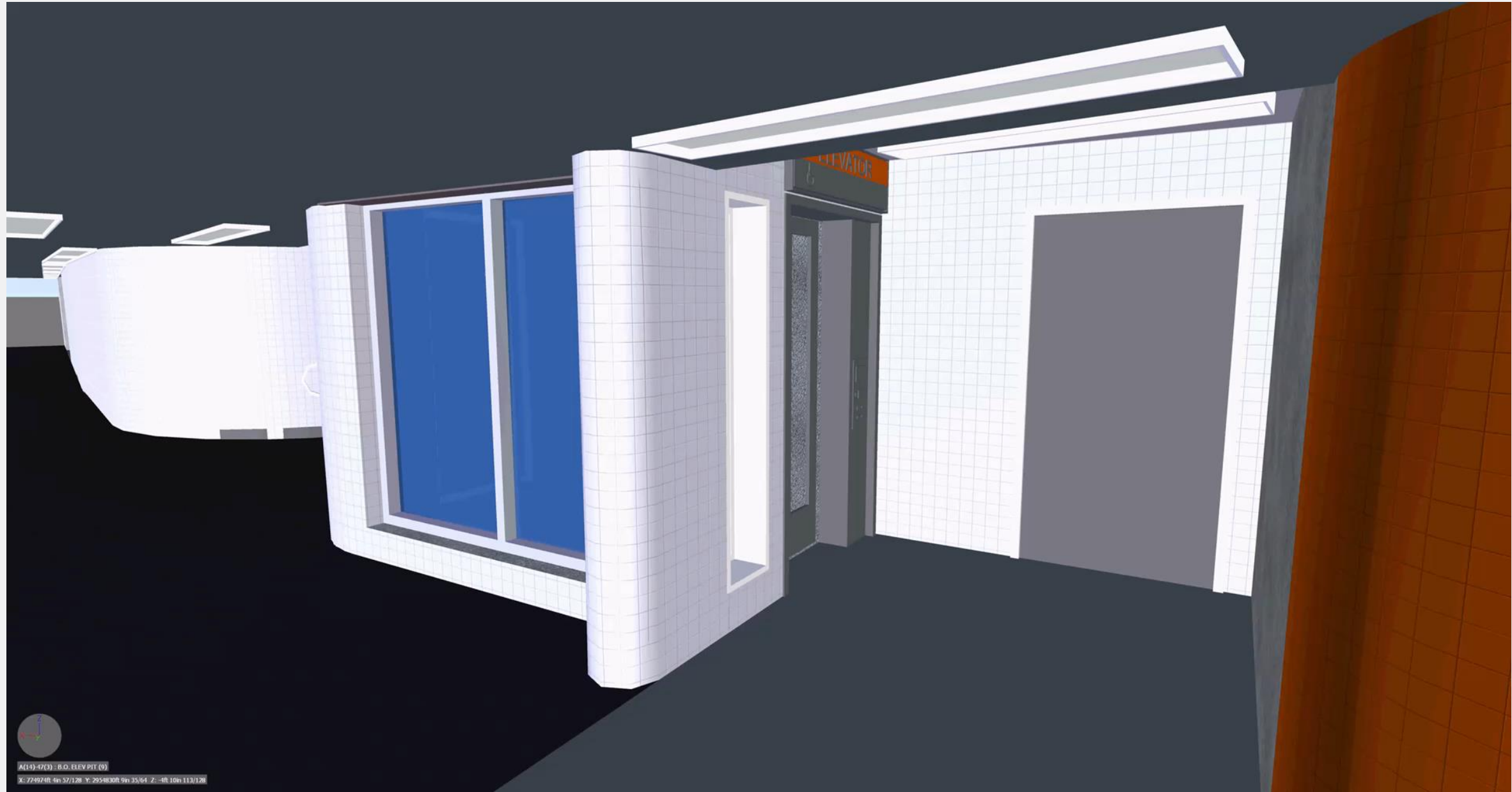
Winter Street existing conditions



Proposed Macy's Elevator Location

Note: This drawing is not to scale and is only intended for illustrative purposes.

# Macy's Elevator

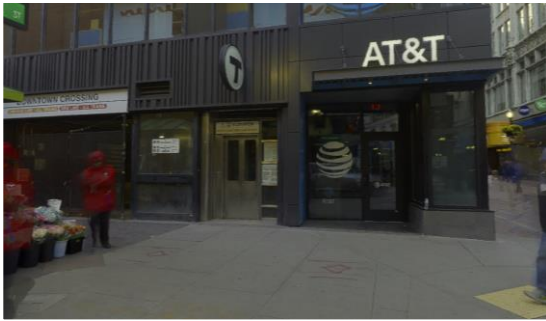




# Winter Street Elevator



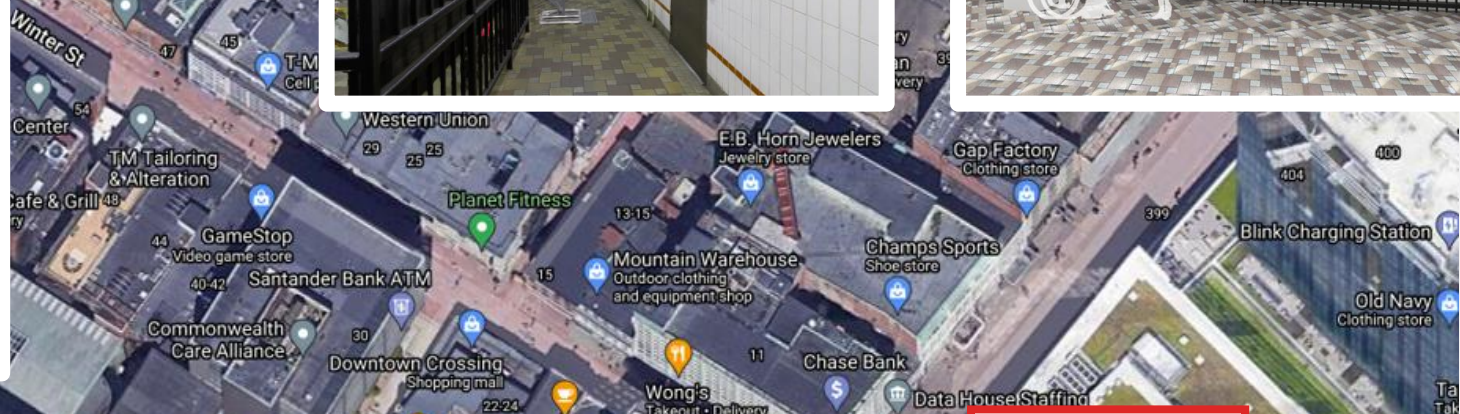
Winter Street existing conditions



Winter Street existing conditions



Proposed new elevator on Orange Line level



Winter Street existing conditions

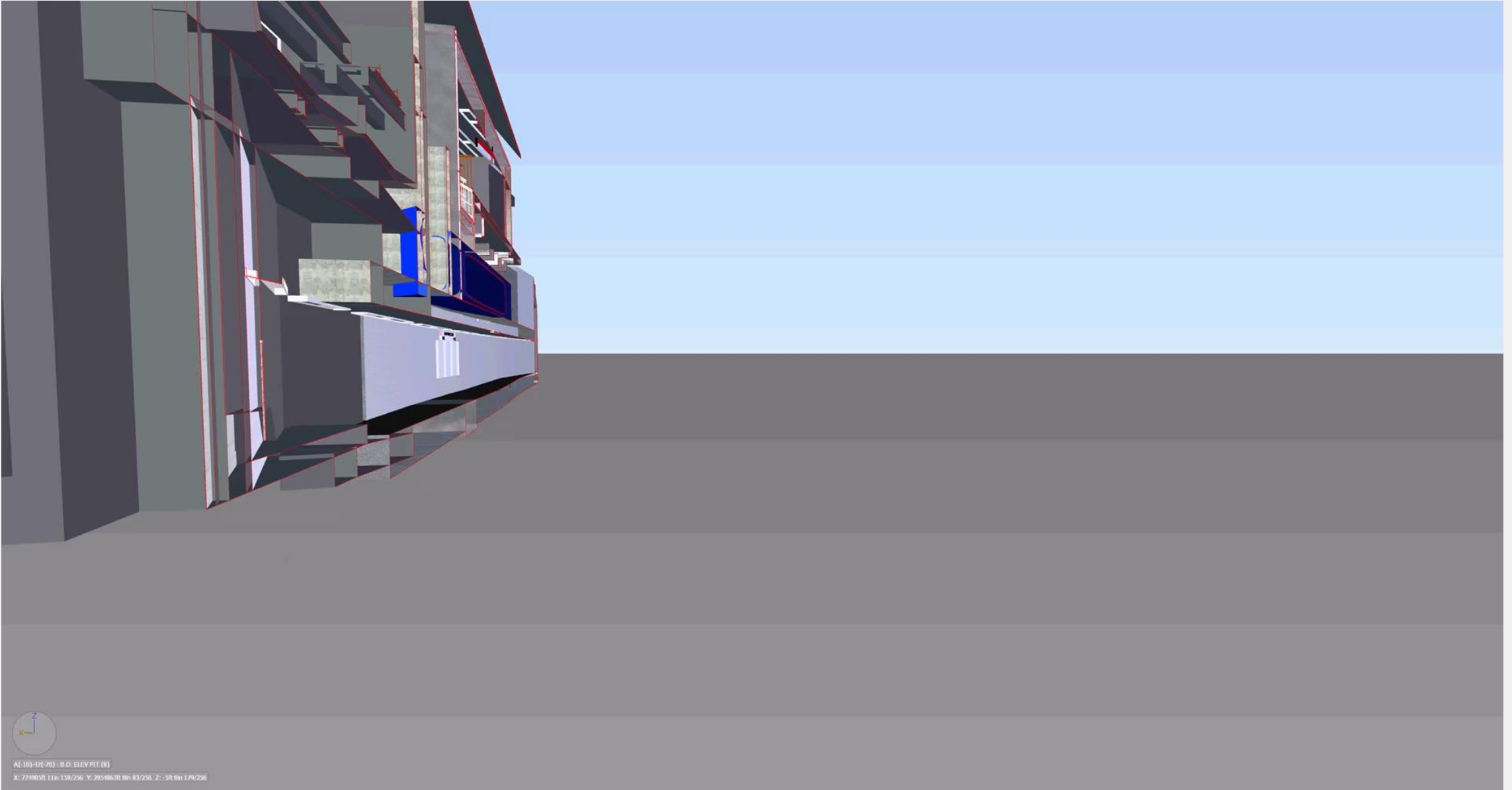


Proposed new elevator on Red Line level



Note: This drawing is not to scale and is only intended for illustrative purposes.

# Winter Street Elevator







# Outreach, Website & Contact Information

## Outreach Schedule for 2021

- Downtown Crossing Business Improvement District: Summer 2021
- Boston Disability Commissioner: Summer 2021
- R-TAG: Summer 2021
- Boston Disability Commission: October 2021
- Public Meeting: October 25, 2021

## Anticipated Schedule for 2022

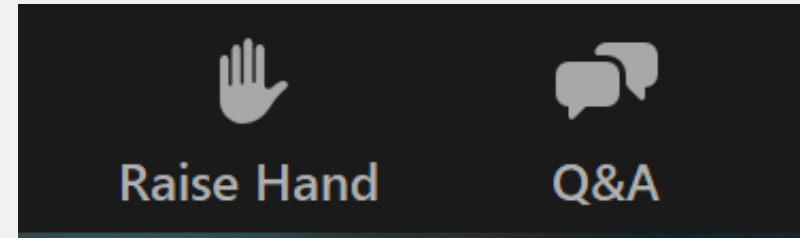
- Briefings and Public Meeting on 75% Design in spring 2022

## Website & Contact Details

- **Website:** [www.mbta.com/dtx-accessibility](http://www.mbta.com/dtx-accessibility)
- **E-mail:** [DTX@MBTA.com](mailto:DTX@MBTA.com)



# Public Comment



*Please share only one question or comment at a time.*

- Press the “**Raise Hand**” button to share your question or comment verbally. Wait for the moderator to recognize and unmute you before speaking

*After you speak, we will lower your hand and you will be muted to allow the team to respond and provide opportunities for others to participate*

- Use the “**Q&A**” button to submit a typed question or comment
- Comments may also be sent to [DTX@mbta.com](mailto:DTX@mbta.com).
- You can learn more about the project and sign up for email updates at [mbta.com/dtx-accessibility](https://mbta.com/dtx-accessibility).



THANK YOU!



# Park Street Elevator

## Proposed

### Elevator

- Type: In-ground Hydraulic
- Configuration: Pass-Through
- Hoistway: 7'-2" X 10'-0"
- Cab Size: 7'-10 1/2" X 5'-0"
- MBTA ADA/Stretcher Preferred: Yes

### AFC Booth

- To be Relocated

### Elevator Machine Room

- Size: 110 Sq. Ft
- Reuse & Expand Existing EMR
- Location: Concourse Level

Proposed Park Street Elevator

Existing 808 Elevator To Be Demolished

Existing Pump Well

## Existing Condition

### Elevator

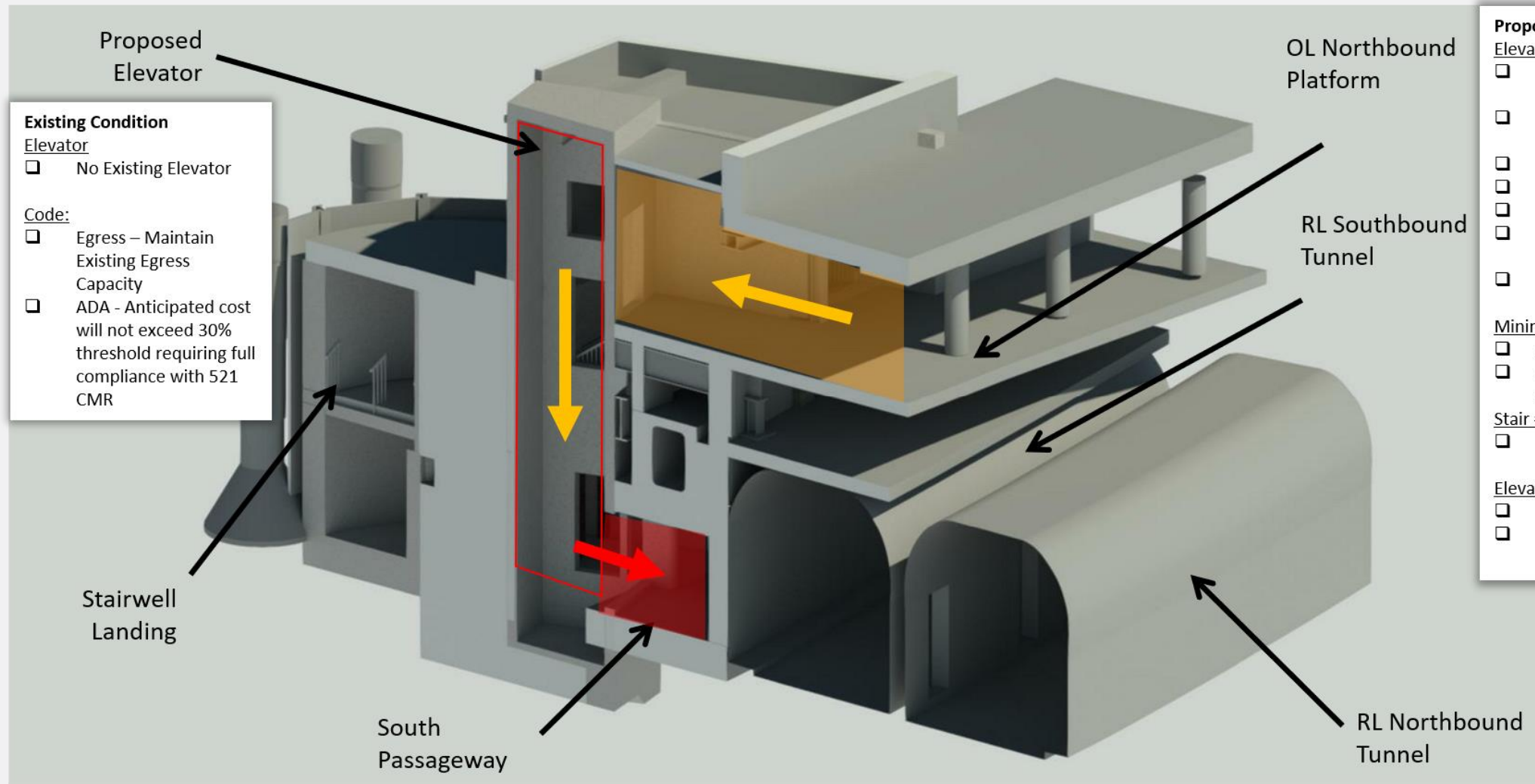
- Elevator #808 Surpassed Usable Lifespan
- Type: In-ground Hydraulic
- Configuration: Single Entry
- Hoistway: 8'-0" X 5'-9"
- Cab Size: 4' -1" X 4'-6"
- Non-Stretcher Compliant

### Code:

- Egress – Maintain Existing Egress Capacity
- ADA - Anticipated cost will not exceed 30% threshold requiring full compliance with 521 CMR



# Macy's Elevator



**Existing Condition Elevator**

- No Existing Elevator

**Code:**

- Egress – Maintain Existing Egress Capacity
- ADA - Anticipated cost will not exceed 30% threshold requiring full compliance with 521 CMR

- Proposed Elevator**
- Type: In-ground Hydraulic
  - Configuration: 90-Degree Door
  - Hoistway: 7'-7" X 7'-7"
  - Cab Size: 5'-0" X 5'-0"
  - MAAB Compliance: Yes
  - Stretcher Accommodation: No
  - MBTA Preferred: No
- Minimum MBTA preferred:**
- 90° ADA: 76.25" x 76.25"
  - 90° ADA/S: 70.25" x 90.25"
- Stair #2**
- Modifications Required
- Elevator Machine Room**
- Size: Approx. 100 Sq. Ft
  - Location: Concourse Level



# Winter Street Elevator

## Existing Condition

### Elevator

- 2-Stop Elevator (SL-OL)
- Type: In-ground Hydraulic
- Hoistway: 6'-2" x 8'-0"
- Configuration: Pass-Through
- Cab: 4'-6" x 5'-2 1/2"
- Non-Stretcher Compliant

### Code:

- Egress – Maintain Existing Egress Capacity
- ADA - Anticipated cost will not exceed 30% threshold requiring full compliance with 521 CMR

## Proposed

### Elevator

- Type: In-ground Hydraulic
- Configuration: Pass-Through (SL-OL). In-Out (OLRL)
- Hoistway: 7'-2" X 10'-0"
- Cab Size: 7'-10 1/2" X 5'-0"
- ADA Compliance: Yes
- Stretcher Accommodation: Yes

### Stair #8

- Modifications Required

### Elevator Machine Room

- Size: Approx. 150 Sq. Ft
- Location: Concourse Level

