

Accessibility Improvements at

SOUTH ATTLEBORO STATION

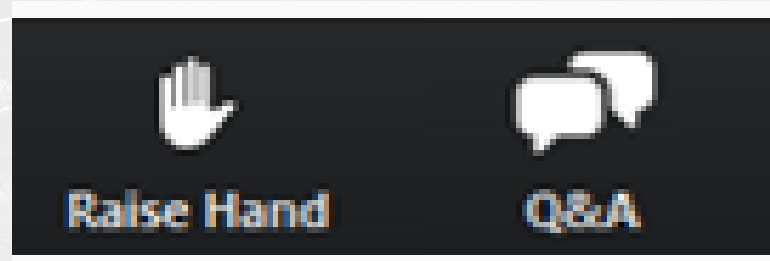
30% DESIGN – VIRTUAL PUBLIC MEETING | 3.4.2021

Notification of Recording

- This meeting will be recorded, and the recording and chat transcript are considered a public record.
- This meeting recording and a copy of the presentation will be posted on the project website following the conclusion of the meeting.

Q&A after the Presentation

- Please share only one question or comment at a time.
- Use the **Q&A** button at the bottom of your screen to submit a typed question or comment.
- Press the **RAISE HAND** button to share your question or comment verbally. Wait for the moderator to recognize you and unmute you before speaking.



Project Team



- MBTA Chief of Capital Delivery: Katie Choe
- MBTA Deputy Chief of Capital Delivery: Nazanin Mossahebi
- MBTA Senior Director: Anthony DeDominicis
- MBTA Dir. Of Special Projects: Angel Donahue-Rodriguez
- MBTA Government Affairs: Trish Foley
- MBTA Project Manager: Nayan Naidoo
- MBTA Project Coordinator: Vanessa White

- Michael Baker Project Manager: Douglas Peterson
- Michael Baker Deputy Project Manager: Joe Maliawco
- Michael Baker Architectural Lead: Karen Breslawski

- City Point Partners - Outreach Consultant: Joe Nolan & Kim Treacy

1. **Project Goals & Scope**
2. **Work to Date & Ongoing**
3. **Existing Conditions**
4. **Project Overview**
5. **Project Details**
6. **Project Phasing & Schedule**
7. **Cost Estimate & Budget**
8. **Public Outreach**
9. **Next Steps**
10. **Q & A**

Goal	Scope
Upgraded Accessibility	<ul style="list-style-type: none">• Two new fully accessible train platforms for level boarding• Improvements to the parking lots and pedestrian features including walkways, relocated accessible parking spaces, ramps and crosswalks
Improved Customer Access	<ul style="list-style-type: none">• A new pedestrian bridge connecting the West Lot to Commuter Rail platforms• Connections to a new walkway to be constructed by others to the inbound platform from the Colvin Street lot to the west.• New bus bays for RTAs servicing Attleboro, Taunton, and Rhode Island
Upgraded Security/Safety	<ul style="list-style-type: none">• Upgraded lighting, fencing, security cameras, communication systems and fire protection

- Environmental Checklist and Project Notification Form
- Amtrak Permit Request and Site Safety Work Plan
- Amtrak Variance Application
- Survey
- Borings
- Utility Research
- HazMat Survey
- 15% Concept Submittal/30% Design submittal
- External Stakeholder Meetings

GATRA (Bus Location and Requirements)

RIPTA (Bus Location and Requirements)

John Case Private Property (Borings and Access)

Amtrak (Access)

Unison Realty Private Property/ Bristol Place Investment (Borings)

City of South Attleboro Departments

MassDOT

Keolis

Existing Conditions: Context - Station Area



I-95

I-95

Newport Avenue

Collins Street

County Street

< PROVIDENCE

BOSTON >

MASSACHUSETTS
RHODE ISLAND

PROJECT

NORTH

General Residential

General Residential

Single Residential

TriMark United East

Home Depot

MacDonald's

Olive Garden

Bob's Discount Furniture

Bristol Place Shopping Center

TJ Max

Single Residential

West Parking Lot

East Parking Lot

Market Basket

Pedestrian Gate

< PROVIDENCE

BOSTON >

MASSACHUSETTS
RHODE ISLAND

General Residential

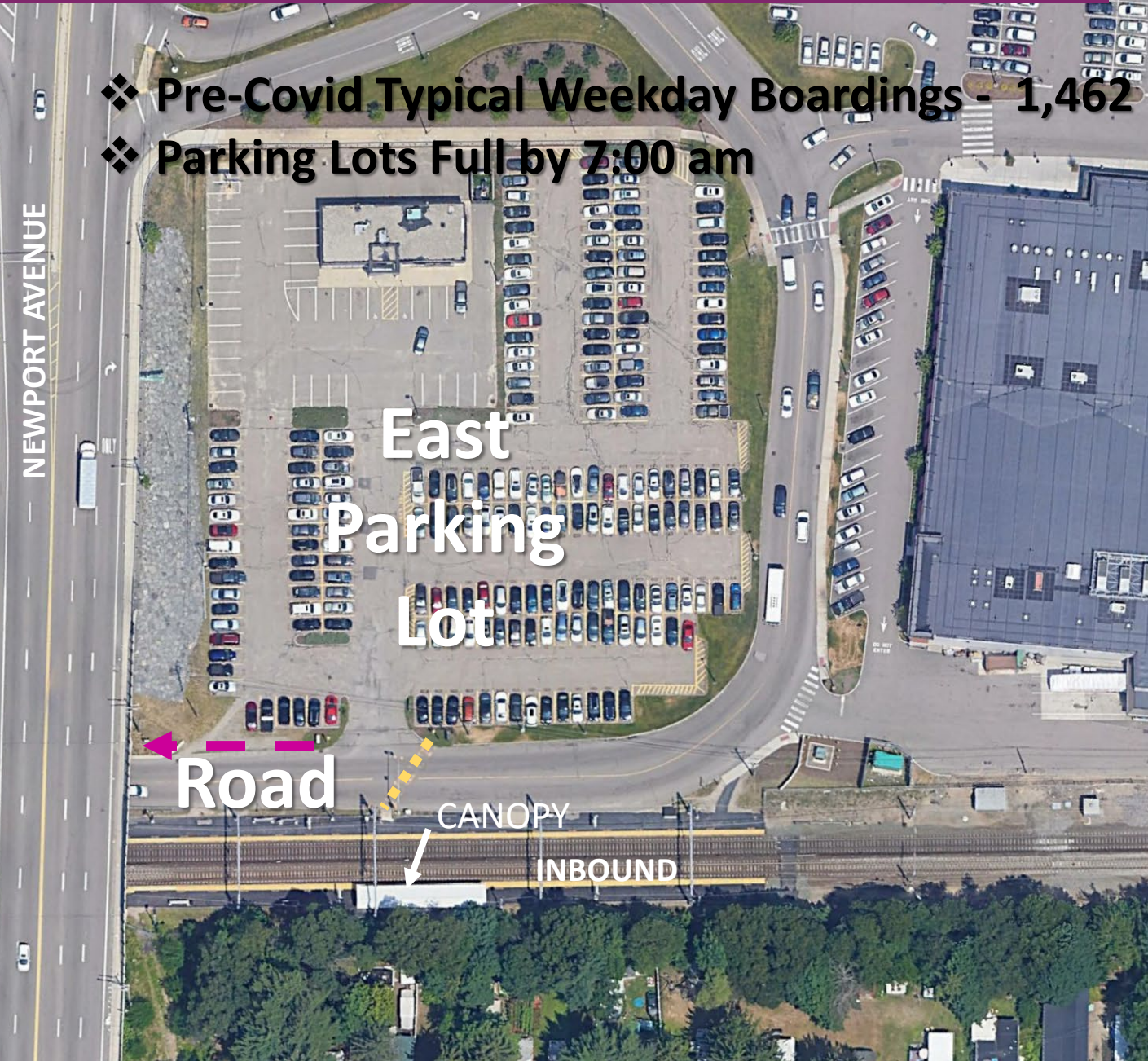
General Residential

Industrial

Single Residential

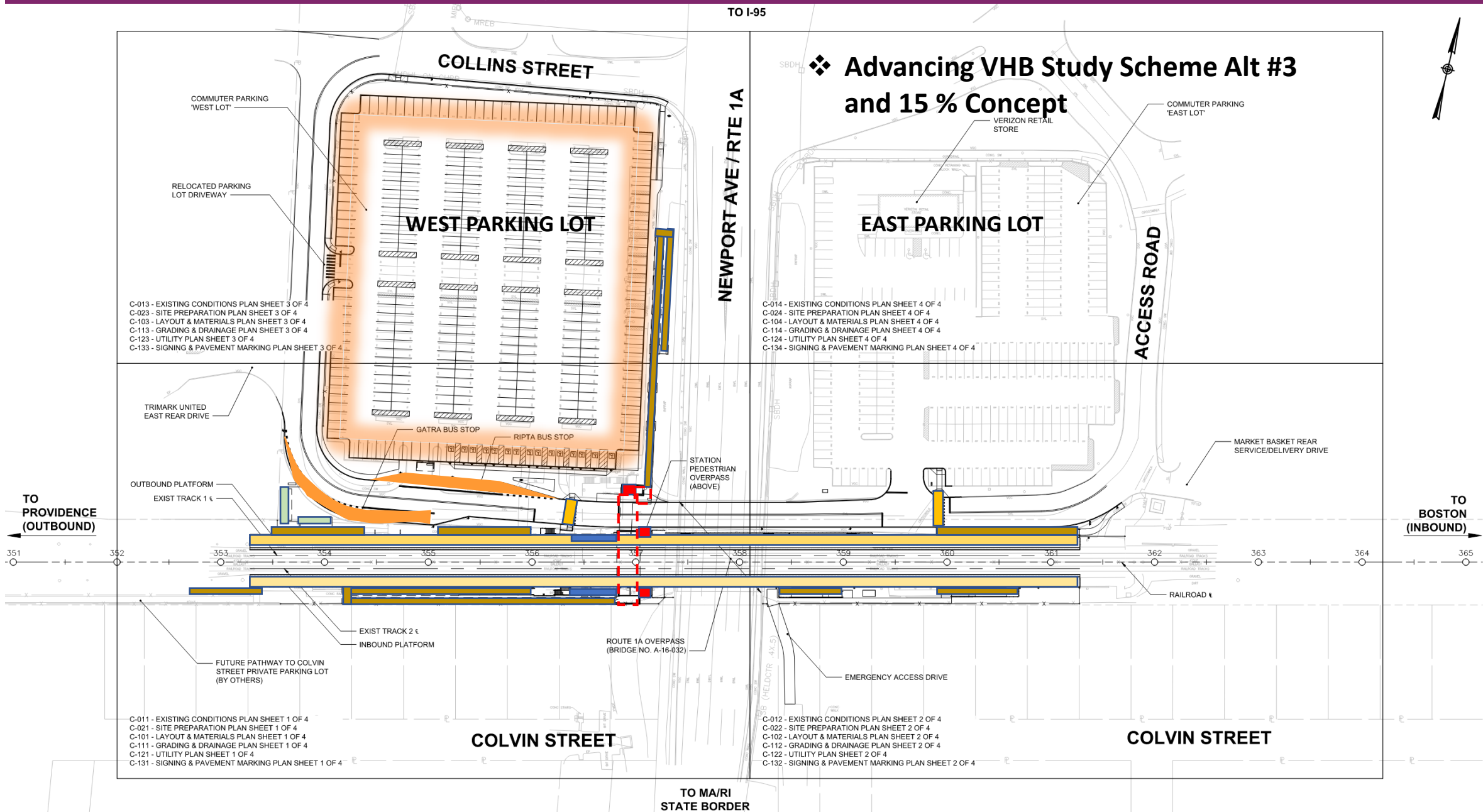
Single Residential

Existing Conditions



- ❖ Pre-Covid Typical Weekday Boardings - 1,462
- ❖ Parking Lots Full by 7:00 am

Station Improvements – Project Overview

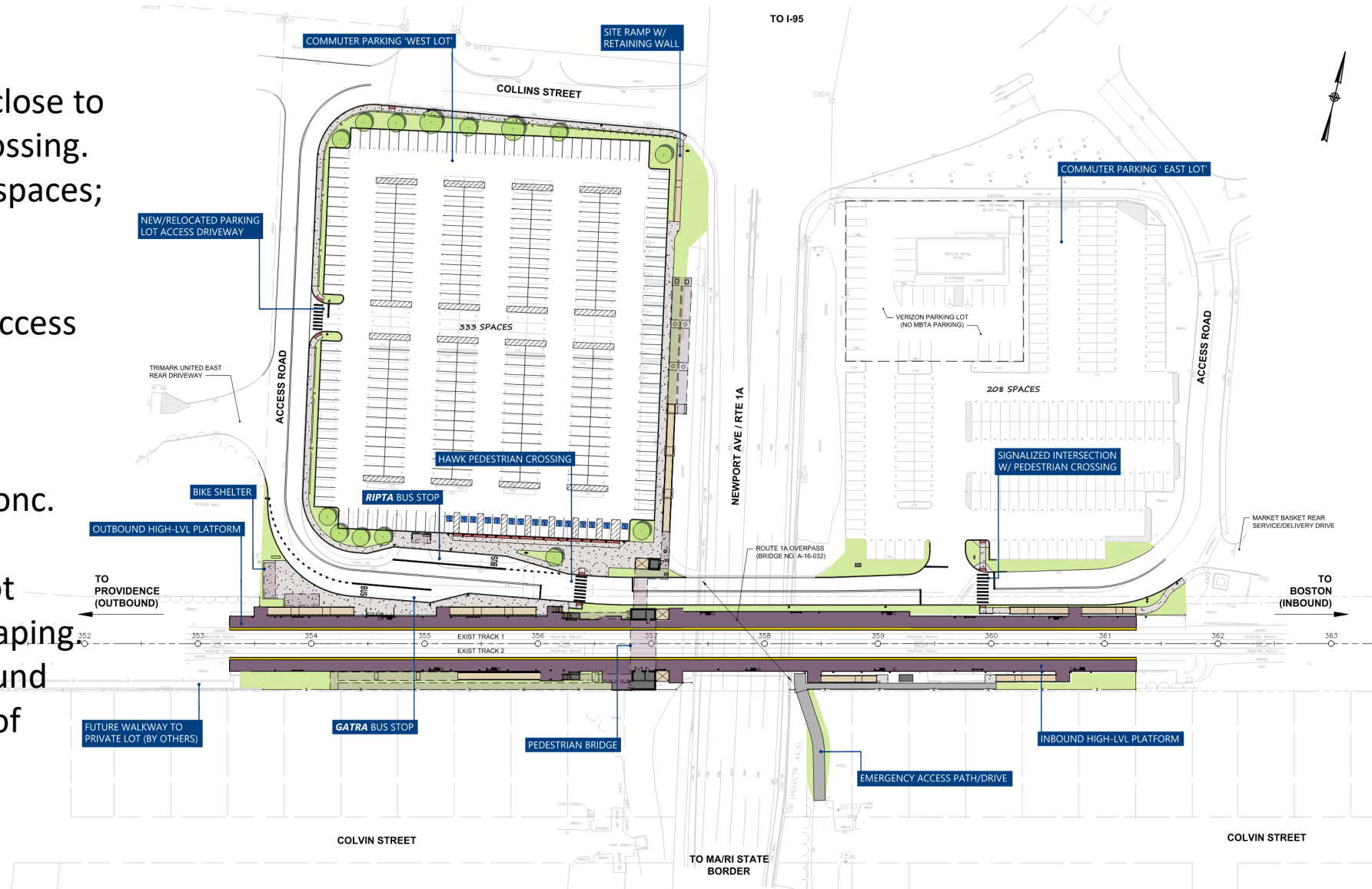


Project Details: Civil/Site



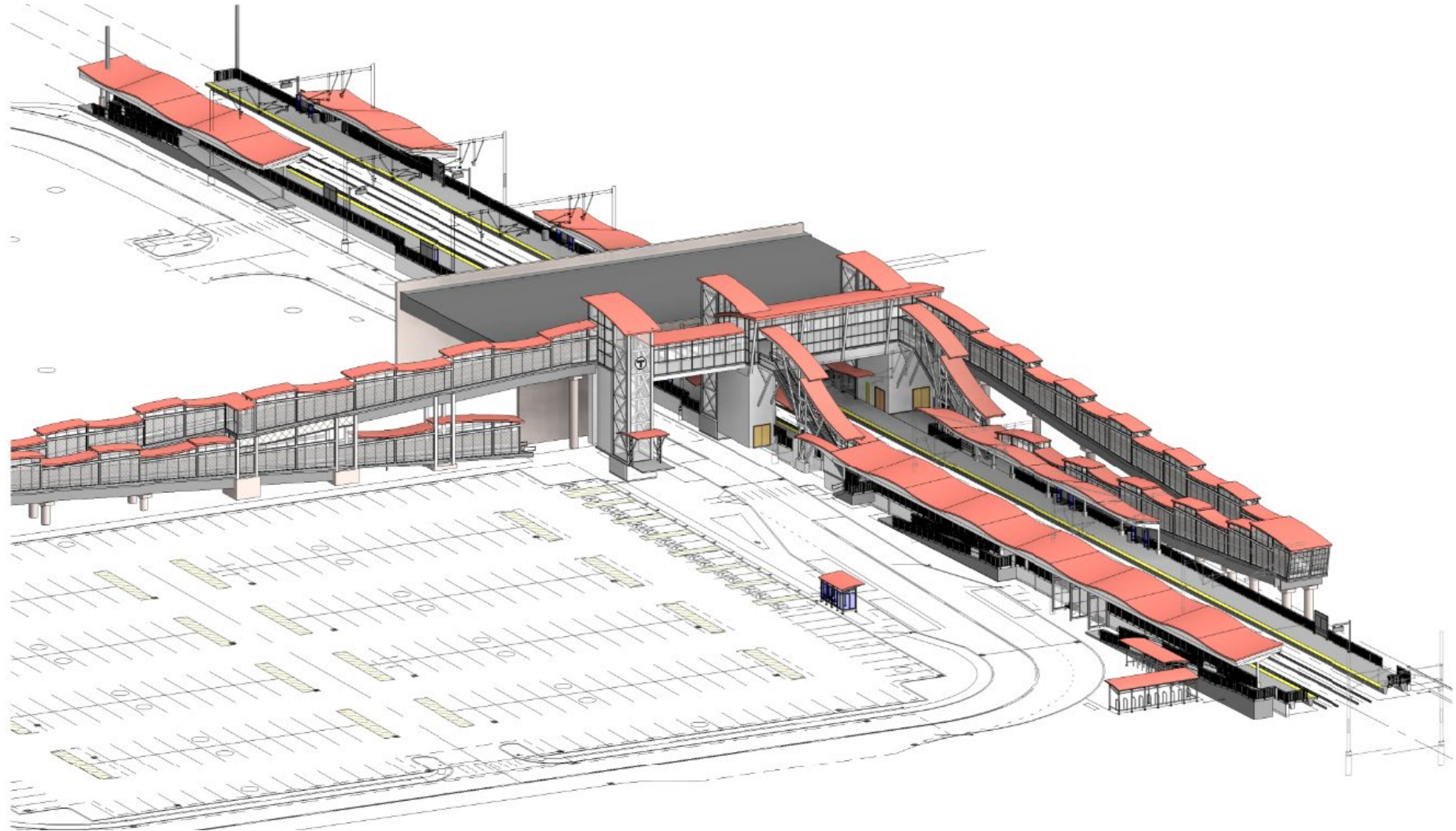
Highlights

- Provide central accessible spaces close to elevators/ramp and pedestrian crossing.
- Parking capacity - West Lot is 333 spaces; East Lot is 208 spaces.
- Relocated West lot vehicle access
- Reconfiguration of crosswalks at Access Rd.
- New RIPTA & GATRA bus stops w/ shelters.
- New granite curbing, pavement, conc. sidewalk, pavement markings, etc.
- New site lighting, fencing (West Lot perimeter and RR ROW), & landscaping
- Emergency access path from inbound platform to Colvin St. at east side of Newport Ave.



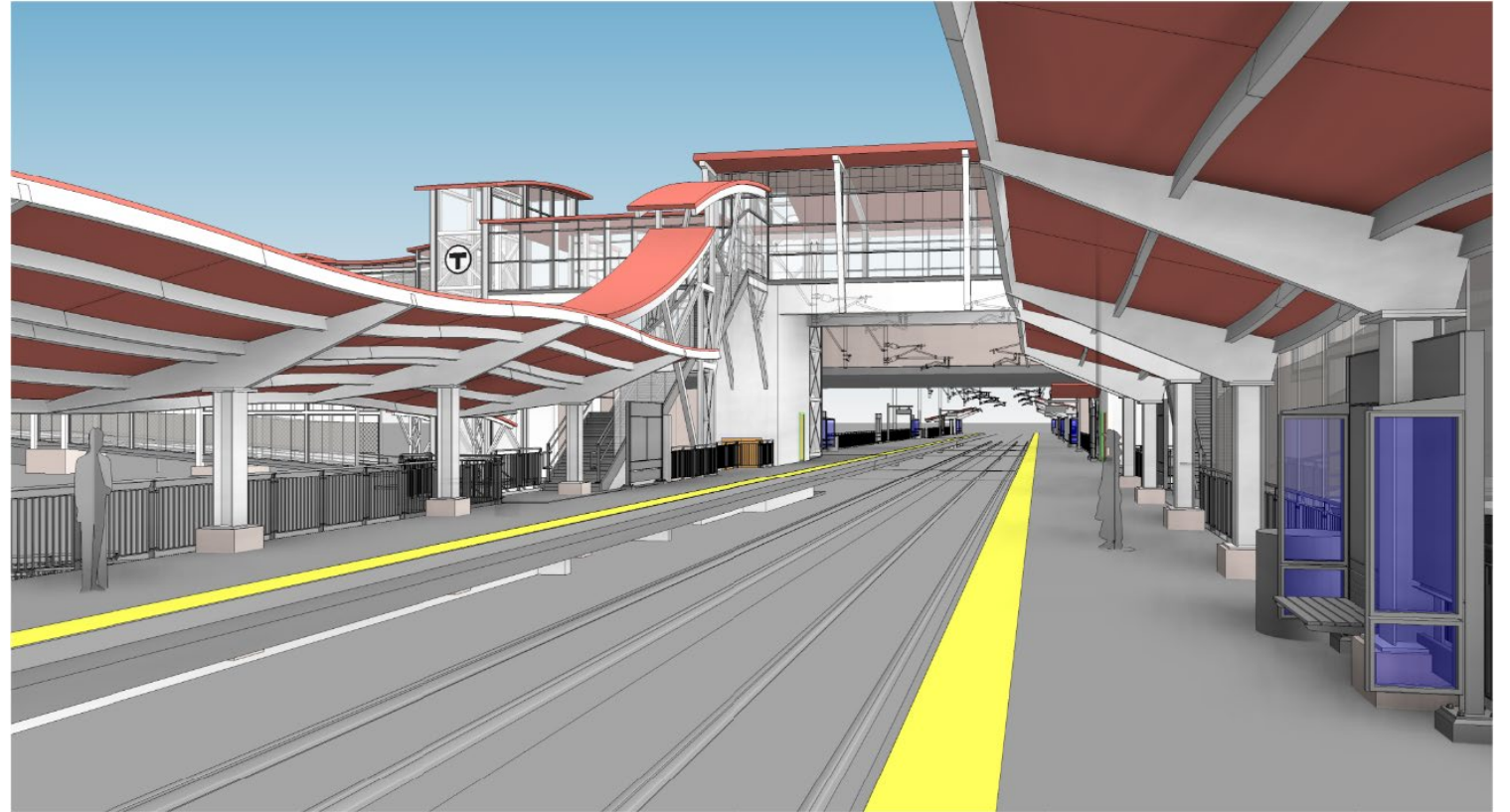
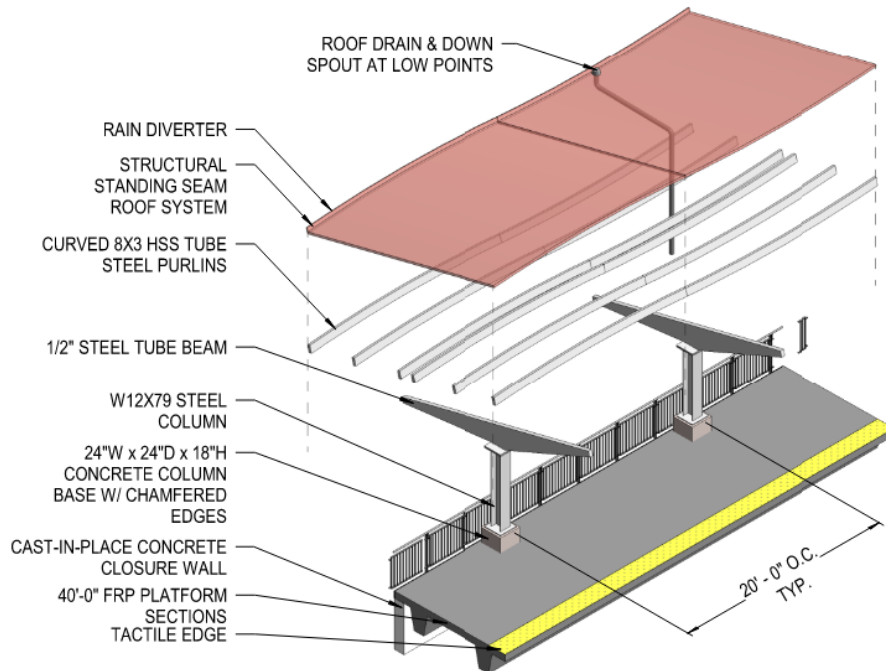
Highlights and Features

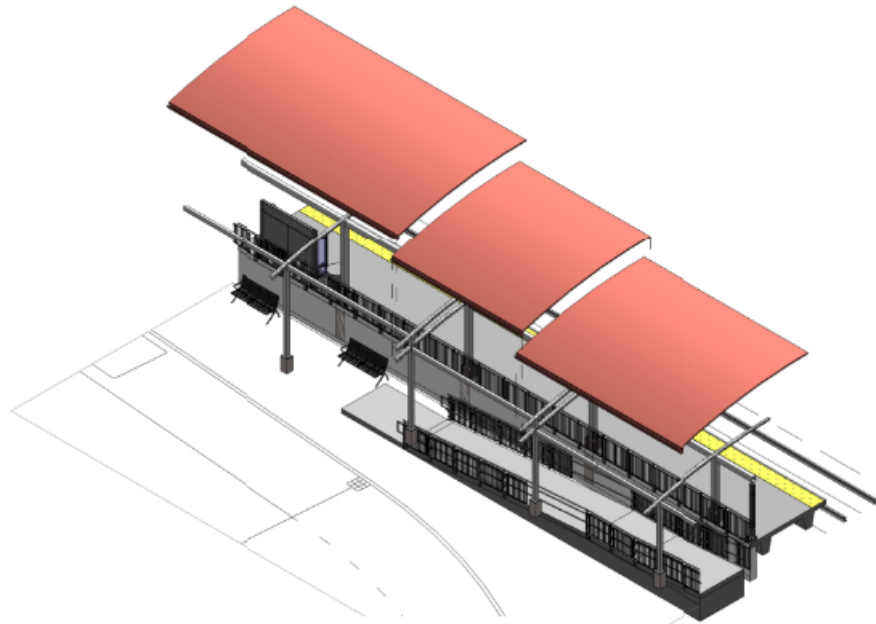
- Easier access to east end of Outbound platform and thereby access to up and over bridge
- Integration of pass-thru elevators into circulation and provision of redundant access to all areas
- Circulation elements are enclosed however material choices allow for light and views
- Covered Bike parking is included
- Bus shelters incorporated into project



Highlights and Features

- Connections to and from circulations elements are covered
- Increased overall platform coverage
- Drainage of roofs will be away from tracks





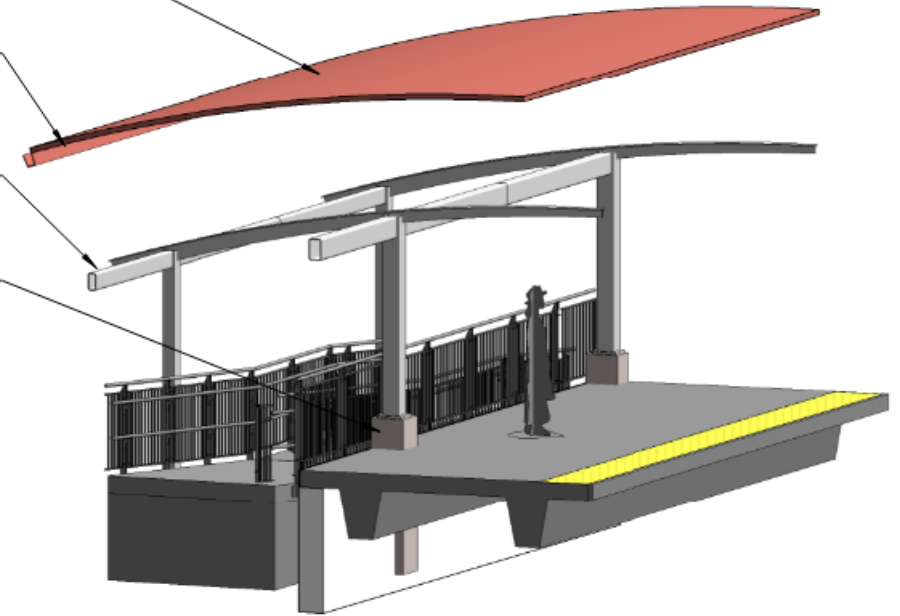
EACH SECTION OF CANOPY USES SAME FRAMING MEMBERS REGARDLESS OF HEIGHT. ONLY COLUMN HEIGHTS DIFFER SLIGHTLY

STRUCTURAL STANDING SEAM METAL ROOF

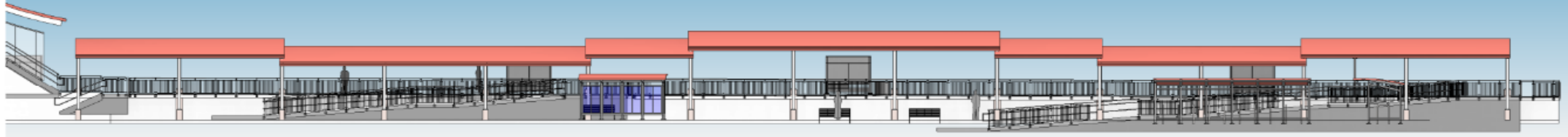
CONTINUOUS GUTTER

STEEL FRAMING

18" CONC. BASE



NORTH ELEVATION (FROM WEST PARKING)





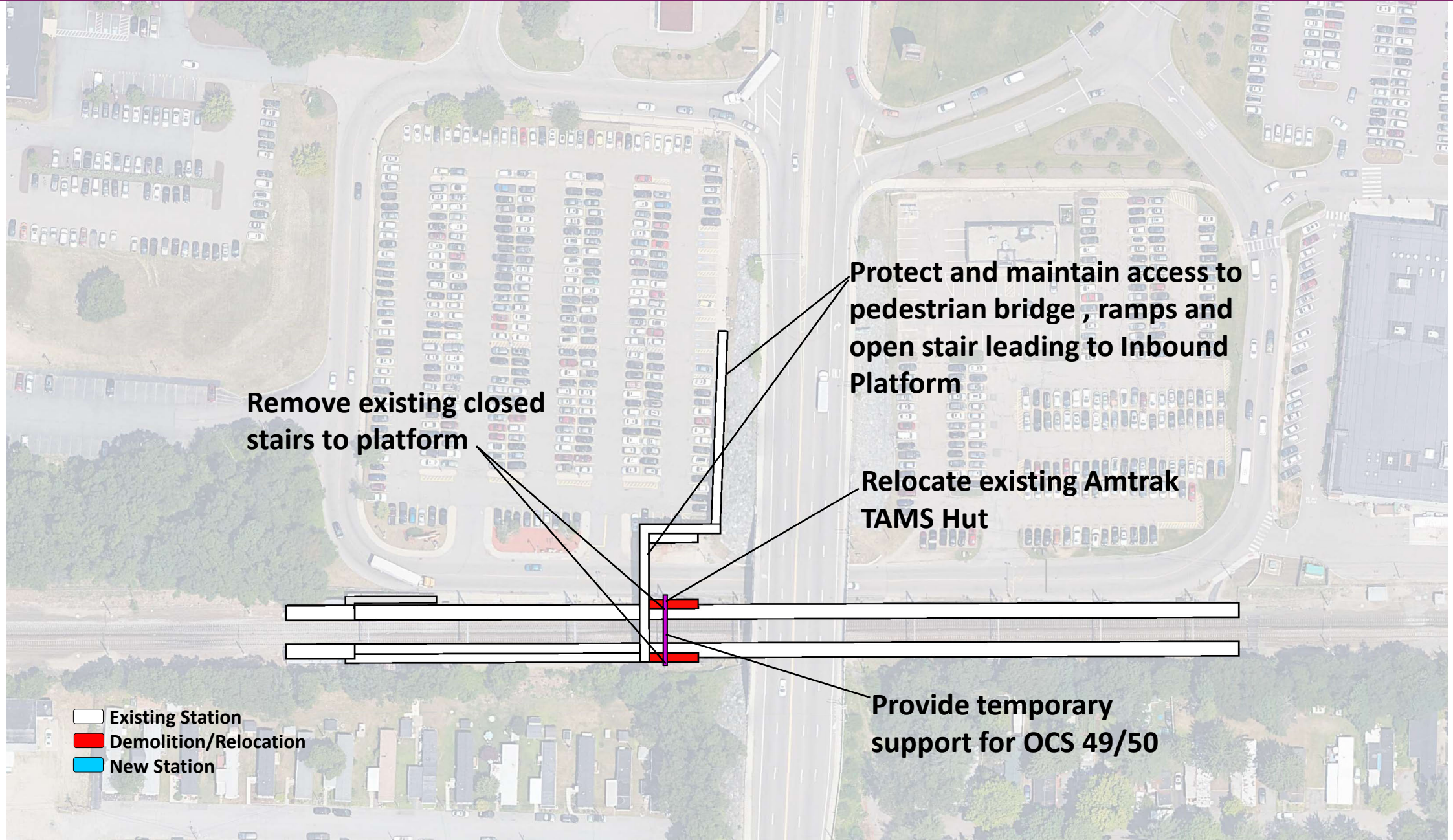
Preliminary Phasing



**Massachusetts Bay
Transportation Authority**

**Michael Baker
INTERNATIONAL**

Preliminary Phase 1



Remove existing closed stairs to platform

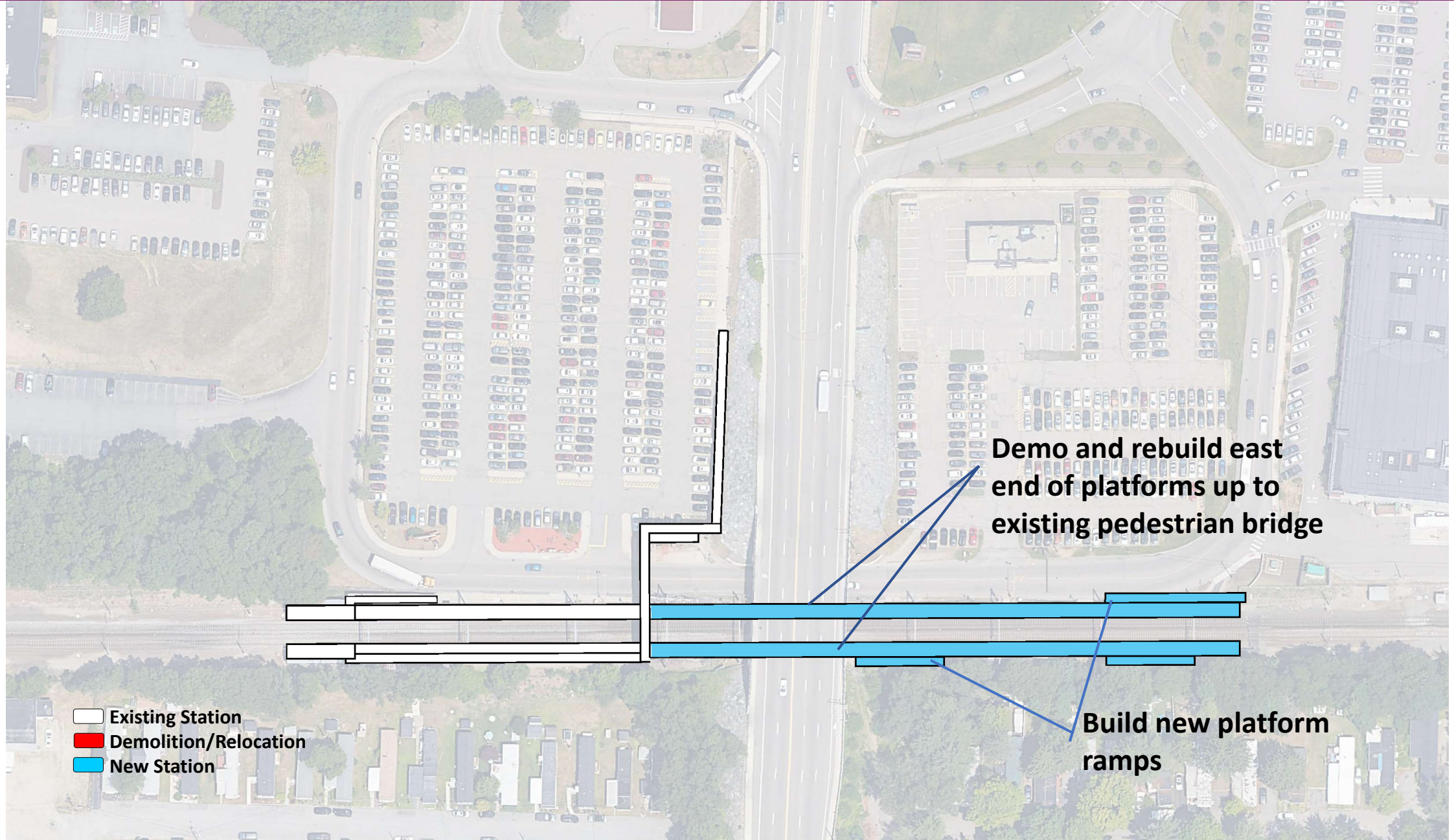
Protect and maintain access to pedestrian bridge, ramps and open stair leading to Inbound Platform

Relocate existing Amtrak TAMS Hut

Provide temporary support for OCS 49/50

-  Existing Station
-  Demolition/Relocation
-  New Station

Preliminary Phase 2

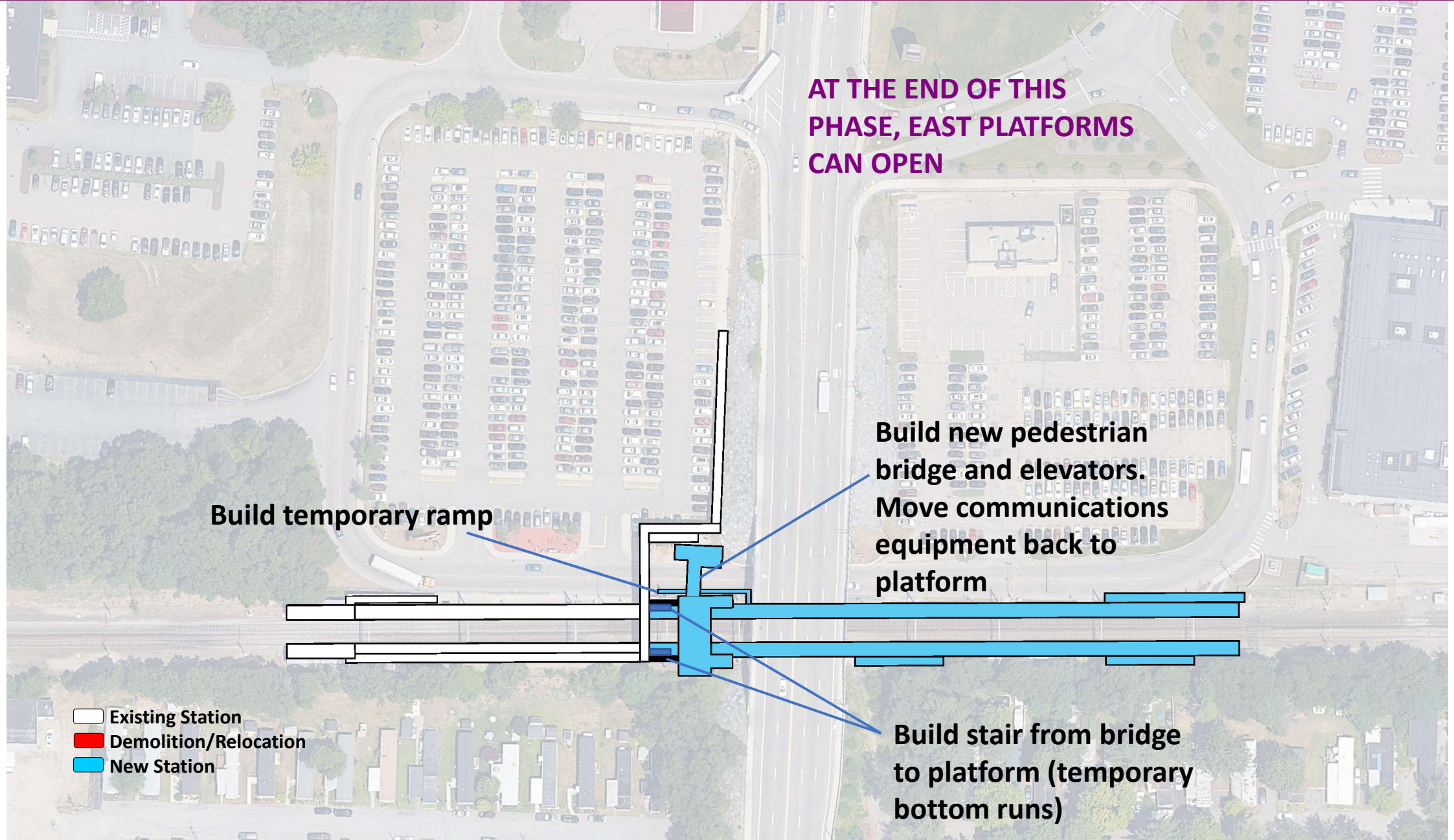


- Existing Station
- Demolition/Relocation
- New Station

Demo and rebuild east end of platforms up to existing pedestrian bridge

Build new platform ramps

Preliminary Phase 3



AT THE END OF THIS PHASE, EAST PLATFORMS CAN OPEN

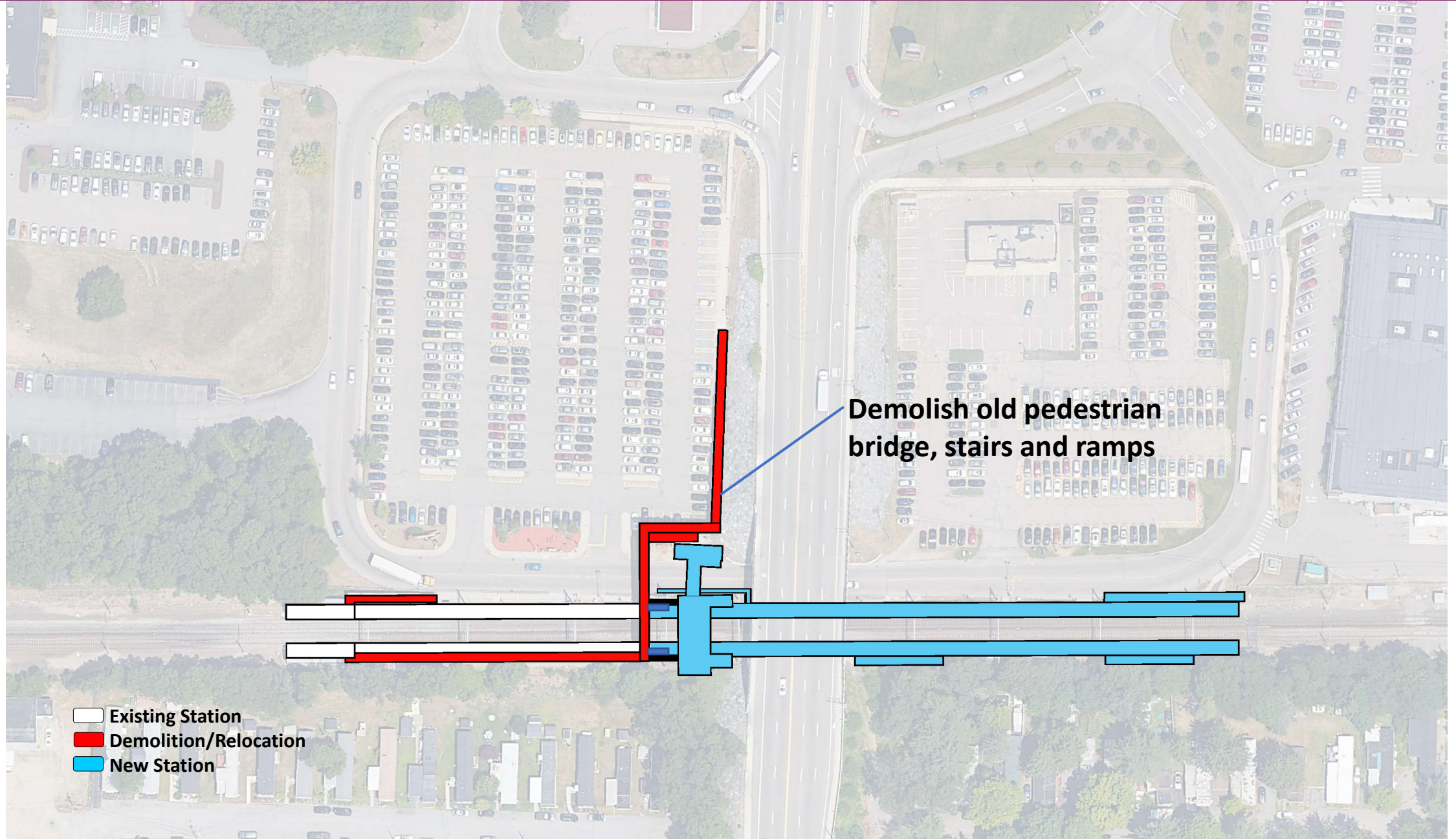
Build temporary ramp

Build new pedestrian bridge and elevators. Move communications equipment back to platform

Build stair from bridge to platform (temporary bottom runs)

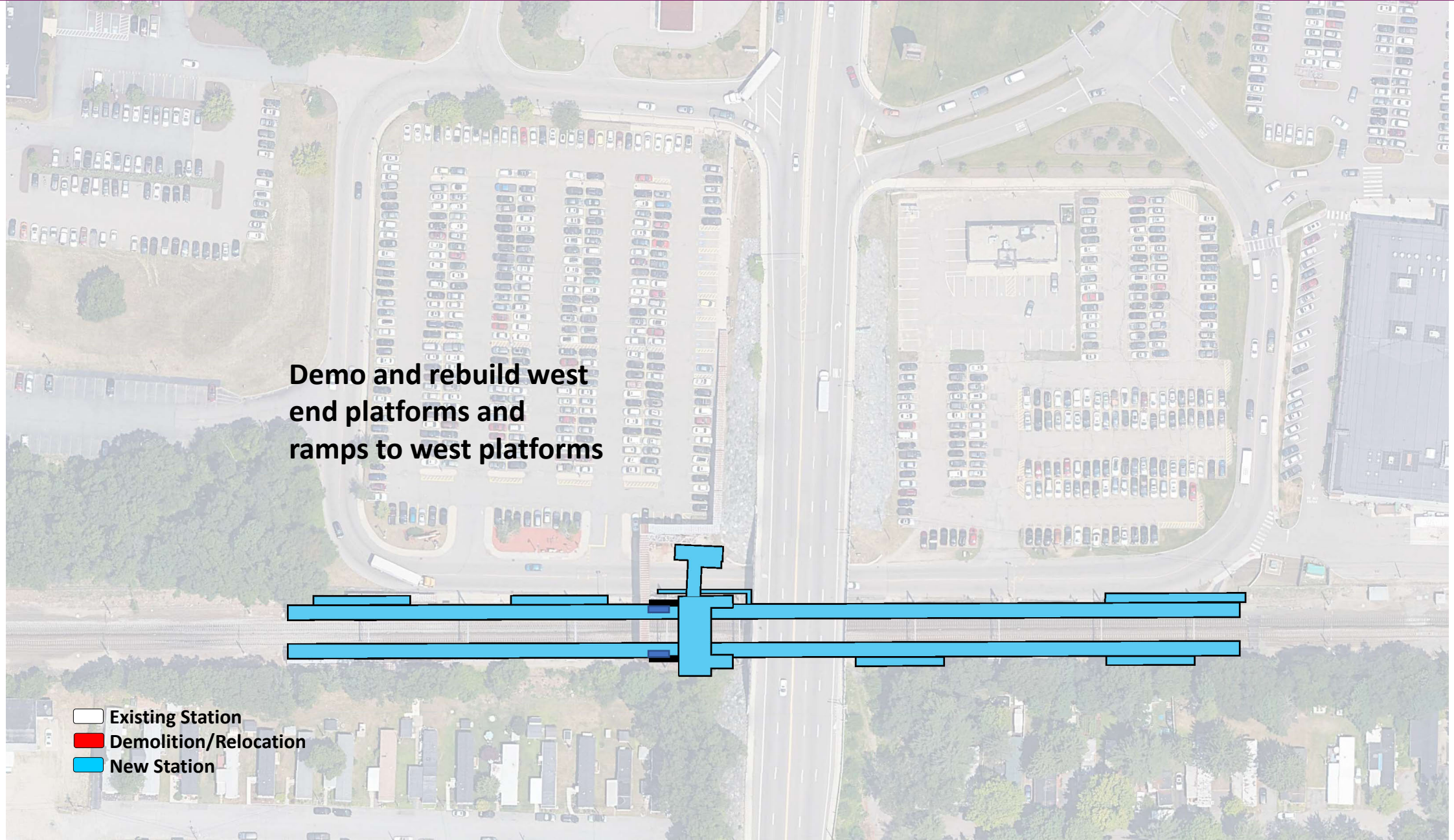
- Existing Station
- Demolition/Relocation
- New Station

Preliminary Phase 4



Demolish old pedestrian bridge, stairs and ramps

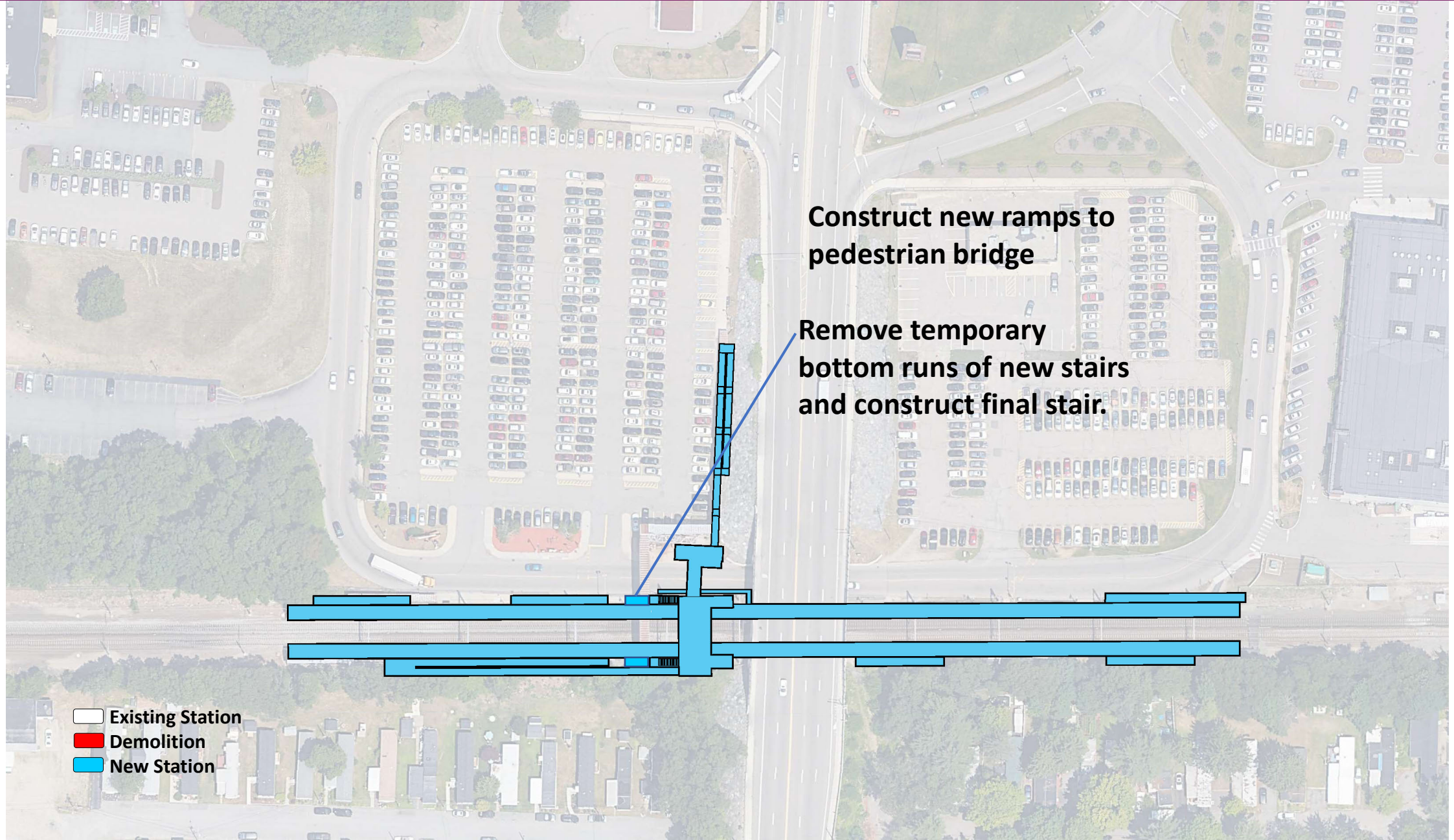
- Existing Station
- Demolition/Relocation
- New Station



**Demo and rebuild west
end platforms and
ramps to west platforms**

-  Existing Station
-  Demolition/Relocation
-  New Station

Preliminary Phase 6

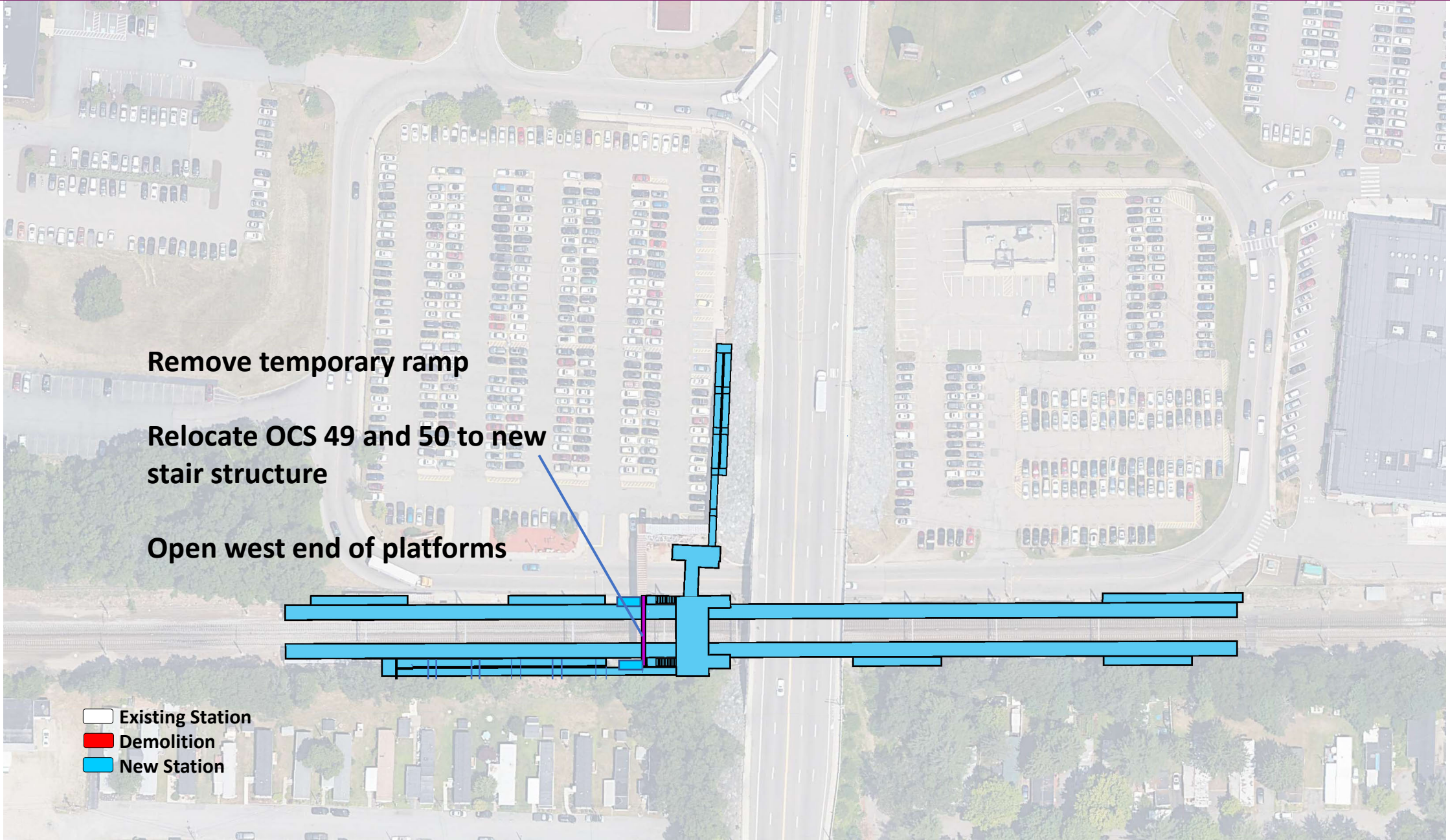


Construct new ramps to pedestrian bridge

Remove temporary bottom runs of new stairs and construct final stair.

- Existing Station
- Demolition
- New Station

Preliminary Phase 7



Remove temporary ramp

Relocate OCS 49 and 50 to new stair structure

Open west end of platforms

- Existing Station
- Demolition
- New Station

Schedule & Milestones

30% Design

November 2020

30% Virtual Public Meeting

March 2021

75% Design

Spring 2021

75% Design Public Meeting

Summer 2021

100% Design Submittal

Fall 2021

Construction

TBD

Cost Estimate and Budget

30% Cost Estimate

(Construction and Design Support)

\$48 Million approx.

**Design and Current Available Funding
(Station Design, Parking Lot, Safety
Inspections, and Pedestrian Bridge
Repairs)**

\$7 Million approx.

**Construction Budget
(Future Federal Funding)**

\$41 Million approx.

- February 26, 2021 – a new field condition was discovered by a contractor that resulted in the closure of South Attleboro Station for further inspection
- The station is currently closed and will remain closed until further notice
- Alternative service is available at Attleboro and Providence Stations
 - Parking passes at Attleboro are available through GATRA
 - RIPTA bus service from South Attleboro to Providence

Next Steps

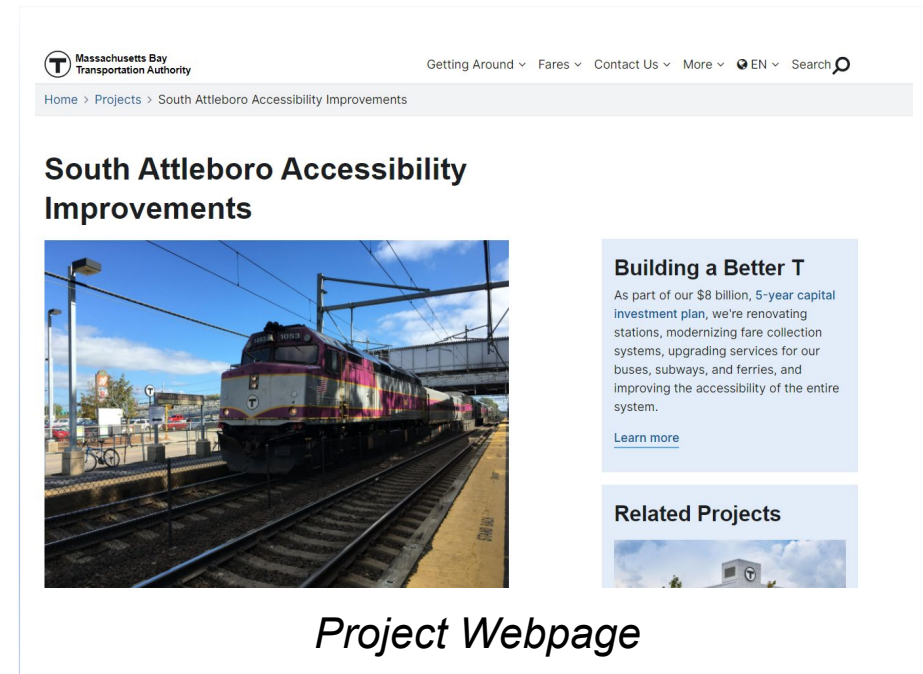
- **Design progression to 75%**
- **75% Design Public Meeting – Summer 2021**
- **Continued Municipal & Stakeholder Engagement throughout design progress**

Visit the project webpage:
mbta.com/SoAttleboroStation

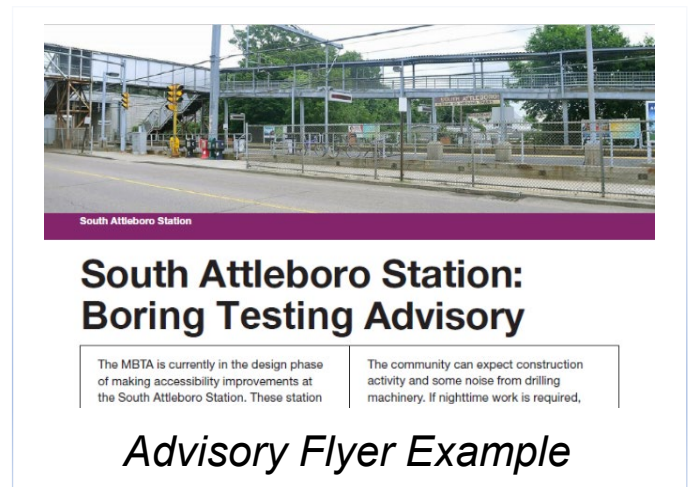
For more information on the MBTA's Forging Ahead Plan visit:
mbta.com/ForgingAhead

- Public and Stakeholders can sign up to receive digital updates on the project via the project email address
- Virtual Public Meetings at 30% and 75% design
- Construction Advisories will be sent out prior to any significant work scheduled (nighttime, weekend work, etc.)

Project Email: SoAttleboroStation@mbta.com



Project Webpage

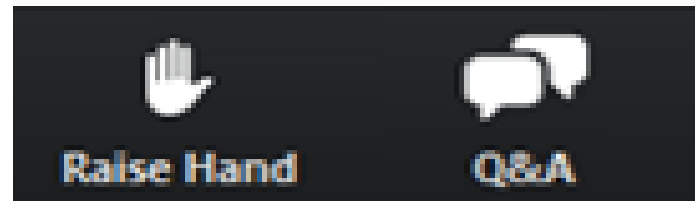


Advisory Flyer Example

- Please share only one question or comment at a time.
- To ask a question via phone, dial *9 and the moderator will call out the last 4 digits of your phone number and unmute your audio when it is your turn.
- Use the “Q&A” button to submit a typed question or comment at any point during the meeting.
- Press the “Raise Hand” button to share your question or comment verbally.

After you raise your hand, wait for the moderator to recognize and unmute you before speaking.

After you share your question or comment, we will lower your hand and you will be muted to allow the team to respond and provide opportunities for others to participate.



You may also submit your questions or comments if we run out of time, after the meeting, to the project email address: SoAttleboroStation@mbta.com or visit www.mbta.com/SoAttleboroStation for more information.



Thank You!