

Evaluating the Market for Ferry Service to Boston

Why Consider Ferry Service?

- Provides a single-seat ride from Lynn to south side of downtown Boston and Seaport district
- Alternative to commuter rail, express bus, Blue Line
- More attractive service for some travelers

Service Concept

- One trip each direction per weekday
 - To either Long Wharf or Fan Pier
- 250-passenger vessel
- Travel time ~40 minutes
- Fare similar to commuter rail fare (\$7 one-way)

Analysis Approach

- Use trip destination and travel time data from cell phone data
- Determine total number of peak period trips from Lynn access area to Boston destination areas
- Consider increase in trips based on projected 2018 – 2040 job growth

Destination Area	2018	2040	Percent Growth
Seaport	22,000	36,300	65%
Downtown Boston	157,800	169,800	8%

Source: MassDOT data and Silver Line Capacity Study

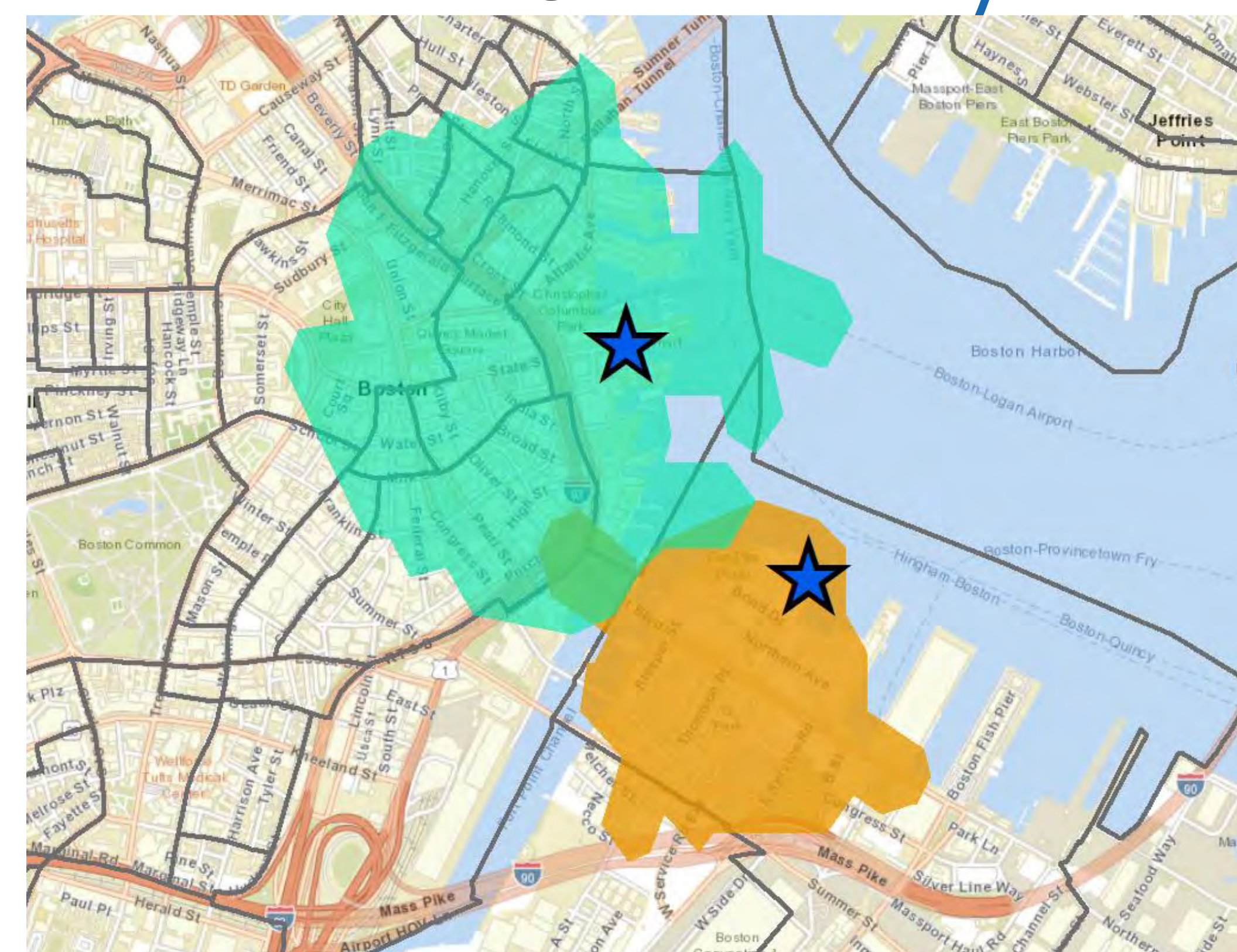
- Look at demographic characteristics of travel markets
- Compare travel time competitiveness of ferry vs. other transit and driving
- Estimate range of ridership based on travel market size and mode share from similar services
- 15-minute drive time consistent with commuters' demonstrated behavior in accessing rail and ferry
- Determine service characteristics, access needs, and land use conditions that could enhance or support a market for ferry

Markets Served

Lynn – Blossom Pier: 15-minute drive



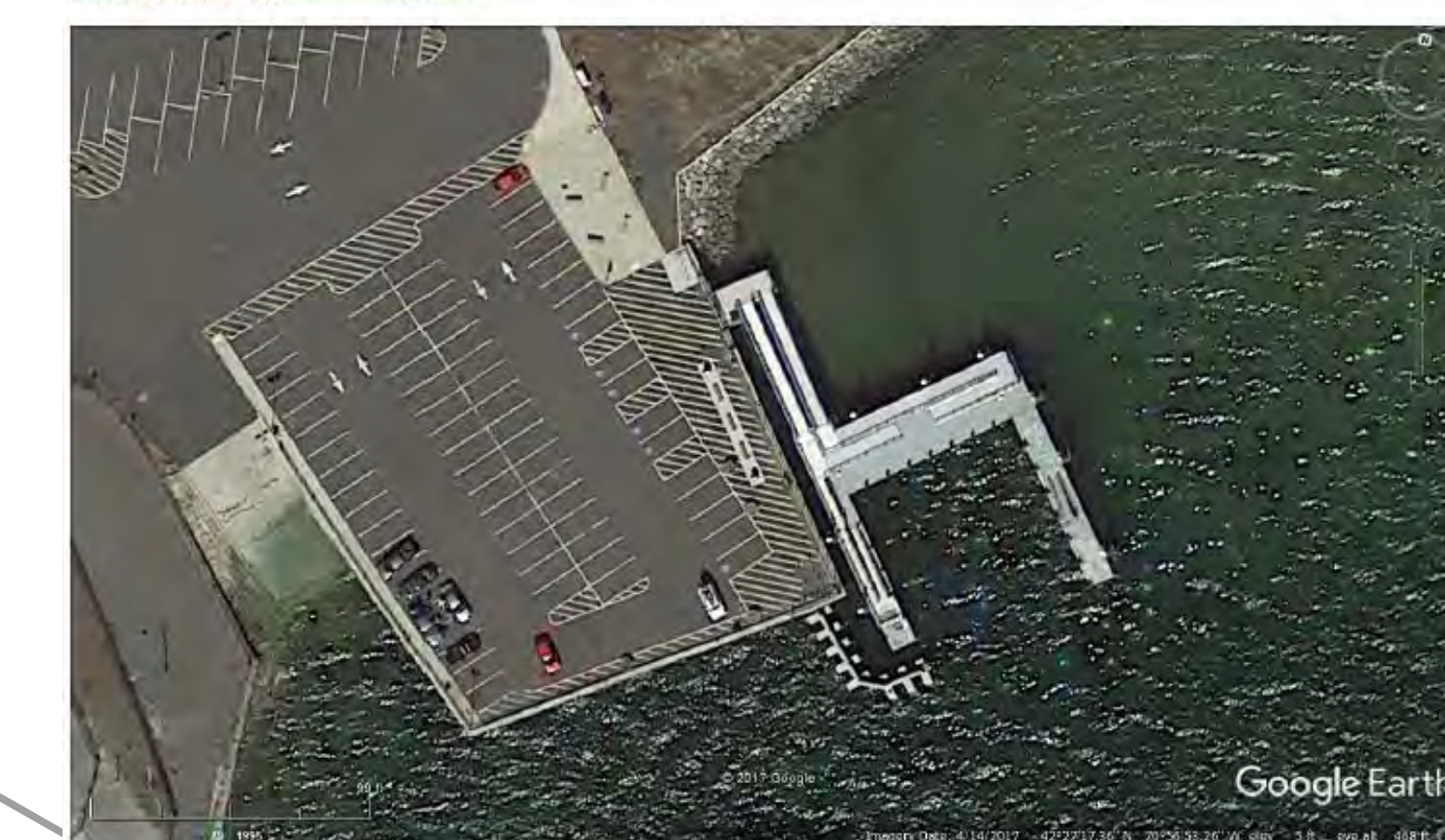
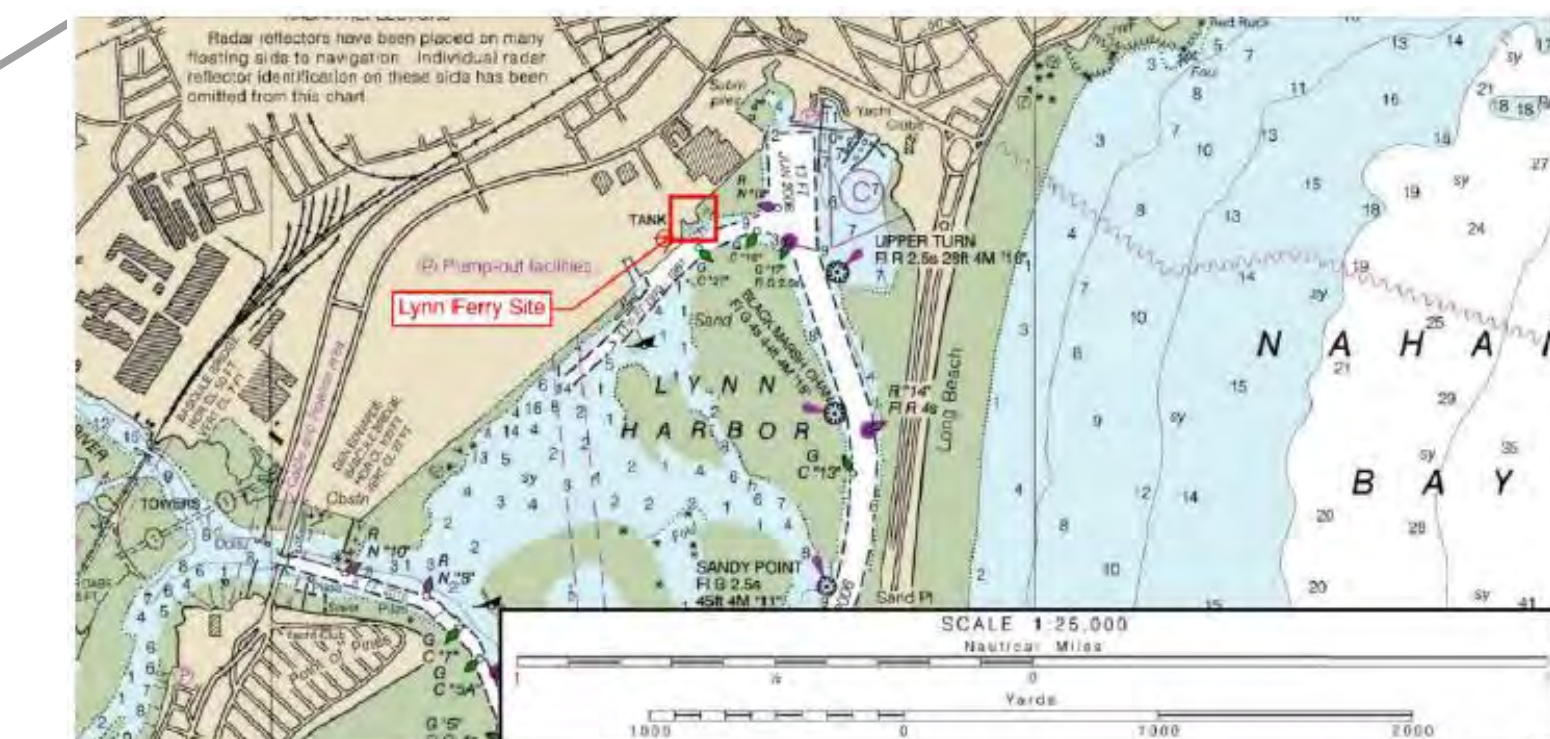
Downtown Boston – Long Wharf



FERRY PROCUREMENT

- MassDOT is currently working with the City of Lynn on procurement
- Proposals for a vessel expected this month

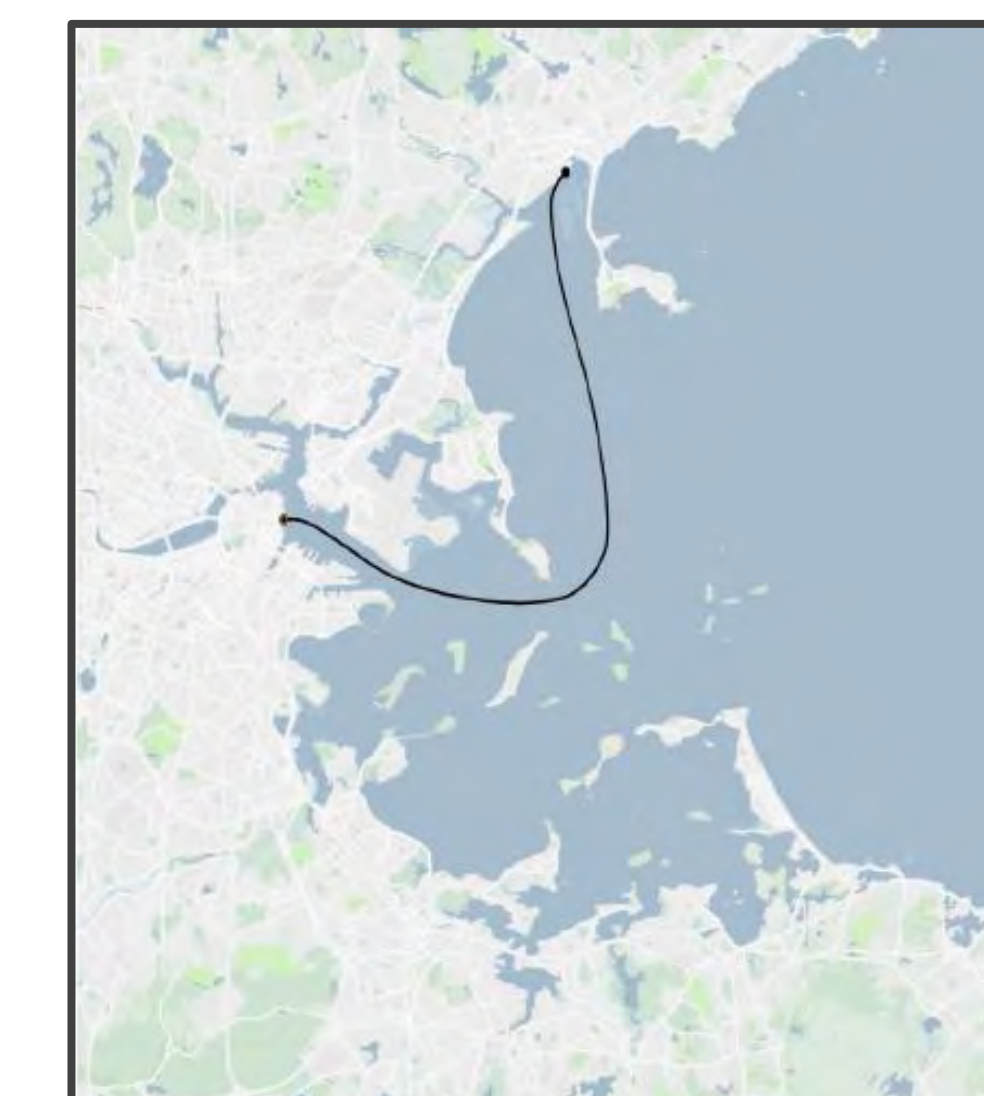
Lynn landing site



2019 Comprehensive Boston Harbor Water Transportation Study

2019 Comprehensive Boston Harbor Water Transportation Study

Mode	Total Time	Walking (Access/Egress)	Transfer	Riding	Trip Frequency
To: Government Center (Downtown)					
Auto – Low Est.	0:35			0:35	
Auto – High Est.	1:20			1:20	
Public Transit	0:54	0:08	0:07	0:39	0:20
Commuter Rail	0:45	0:15	0:04	0:26	0:16
Ferry via Long Wharf North	0:54	0:13		0:41	
To: Boston Convention & Exhibition Center (Seaport)					
Auto – Low Est.	0:35			0:35	
Auto – High Est.	1:10			1:10	
Public Transit	1:18	0:30		0:48	1:10
Commuter Rail	1:21	0:25	0:22	0:34	0:16
Ferry via World Trade Center	0:52	0:14		0:38	



Boston Harbor Now Water Transportation Study, 2017

