

December 2014 Heavy Rail Performance

Wait Time Performance

85% Red 86%
 Orange 81%
 Blue 91%

Passengers with on-time waits
 Goal: 90%*

Number of Days Achieving Goal



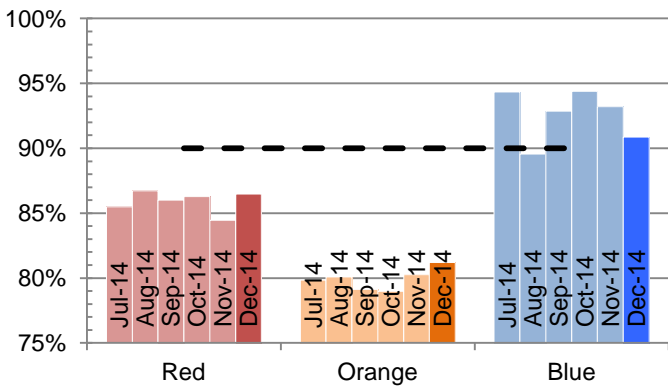
Travel Time Performance

92% Red 92%
 Orange 89%
 Blue 97%

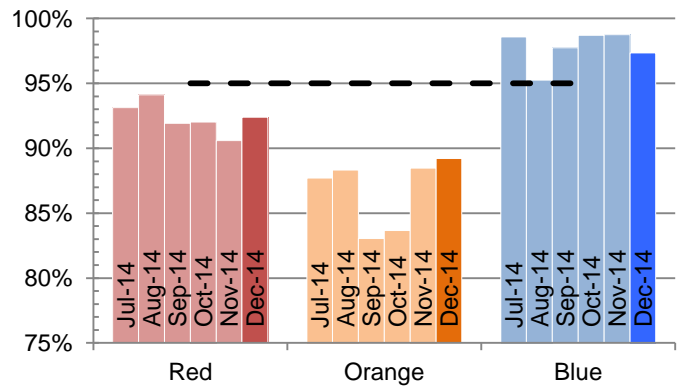
Passengers delayed less than 3 minutes
 Goal: 95%*



Performance Over the Last 6 months



On-Time Passenger Waits



Undelayed Passenger Trips

*Goals are preliminary and subject to change
 Calculations exclude weekend diversions

